

For Research Use Only

SH3D19 Recombinant Matched Antibody Pair, PBS Only



Catalog Number:MP02487-1

Capture Antibody Information

Catalog Number:
86522-2-PBS

Host:
Rabbit

Isotype:
IgG

Purification Method:
Protein A purification

Clone ID:
251364A12

Reactivity:
human

GenBank:
BC108890

Immunogen Catalog Number:
Ag16200

Conjugate:
Unconjugated

Full name:
SH3 domain containing 19

Gene ID:
152503

Detection Antibody Information

Catalog Number:
86522-1-PBS

Host:
Rabbit

Isotype:
IgG

Purification Method:
Protein A purification

Clone ID:
251364F3

Reactivity:
human

GenBank:
BC108890

Immunogen Catalog Number:
Ag16200

Conjugate:
Unconjugated

Full name:
SH3 domain containing 19

Gene ID:
152503

Applications

Tested Applications:
Cytometric bead array

Range:
0.312-40 ng/mL (Cytometric Bead Array)

Recommended Dilutions:
It is recommended that this reagent should be titrated in each testing system to obtain optimal results.

Product Information

MP02487-1 targets SH3D19 in immunoassays as a matched antibody pair. Validated in Cytometric bead array.

Capture antibody: SH3D19 Recombinant monoclonal antibody, PBS Only (Capture) 86522-2-PBS (251364A12). 100 μ g. Concentration 1 mg/mL.

Detection antibody: SH3D19 Recombinant monoclonal antibody, PBS Only (Detector) 86522-1-PBS (251364F3). 100 μ g. Concentration 1 mg/mL.

Unconjugated rabbit recombinant monoclonal antibody pair in PBS only storage buffer at a concentration of 1 mg/mL, ready for conjugation. Created using Proteintech's proprietary in-house recombinant technology. Recombinant production enables unrivalled batch-to-batch consistency, easy scale-up, and future security of supply.

Matched antibody pairs are designed for use in a variety of assays and platforms that require matched antibody pairs.

Antibody use should be optimized for each application and assay.

Storage

Storage:
Store at -80°C.

The product is shipped with ice packs. Upon receipt, store it immediately at -80°C

Storage buffer:
PBS only

For technical support and original validation data for this product please contact:

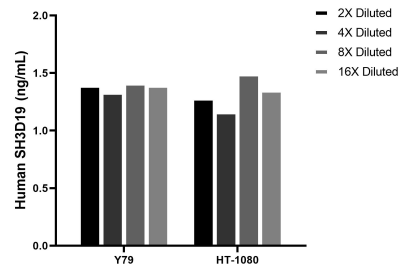
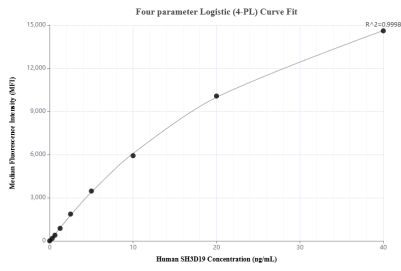
T: 4006900926

E: Proteintech-CN@ptglab.com

W: ptgcn.com

This product is exclusively available under Proteintech Group brand and is not available to purchase from any other manufacturer.

Selected Validation Data



Cytometric bead array standard curve of MPO2487-1, SH3D19 Recombinant Matched Antibody Pair, PBS Only. Capture antibody: 86522-2-PBS. Detection antibody: 86522-1-PBS. Standard: Ag16200. Range: 0.312-40 ng/mL.

The mean SH3D19 concentration was determined to be 1.4 ng/mL in Y79 cell extract based on a 1.1 mg/mL extract load, 1.3 ng/mL in HT-1080 cell extract based on a 1.4 mg/mL extract load.