

For Research Use Only

KHDRBS3 Recombinant Matched Antibody Pair, PBS Only



Catalog Number:MP02486-1

Capture Antibody Information

Catalog Number:
86516-2-PBS
Host:
Rabbit
Isotype:
IgG
Purification Method:
Protein A purification

Clone ID:
251366G10
Reactivity:
human
GenBank:
BC032606
Immunogen Catalog Number:
Ag4438

Conjugate:
Unconjugated
Full name:
KH domain containing, RNA binding, signal transduction associated 3
Gene ID:
10656

Detection Antibody Information

Catalog Number:
86516-1-PBS
Host:
Rabbit
Isotype:
IgG
Purification Method:
Protein A purification

Clone ID:
251366D11
Reactivity:
human
GenBank:
BC032606
Immunogen Catalog Number:
Ag4438

Conjugate:
Unconjugated
Full name:
KH domain containing, RNA binding, signal transduction associated 3
Gene ID:
10656

Applications

Tested Applications:
Cytometric bead array

Range:
0.781-100 ng/mL (Cytometric Bead Array)

Recommended Dilutions:
It is recommended that this reagent should be titrated in each testing system to obtain optimal results.

Product Information

MP02486-1 targets KHDRBS3 in immunoassays as a matched antibody pair. Validated in Cytometric bead array.

Capture antibody: KHDRBS3 Recombinant monoclonal antibody, PBS Only (Capture) 86516-2-PBS (251366G10). 100 μ g. Concentration 1 mg/mL.

Detection antibody: KHDRBS3 Recombinant monoclonal antibody, PBS Only (Detector) 86516-1-PBS (251366D11). 100 μ g. Concentration 1 mg/mL.

Unconjugated rabbit recombinant monoclonal antibody pair in PBS only storage buffer at a concentration of 1 mg/mL, ready for conjugation. Created using Proteintech's proprietary in-house recombinant technology. Recombinant production enables unrivalled batch-to-batch consistency, easy scale-up, and future security of supply.

Matched antibody pairs are designed for use in a variety of assays and platforms that require matched antibody pairs.

Antibody use should be optimized for each application and assay.

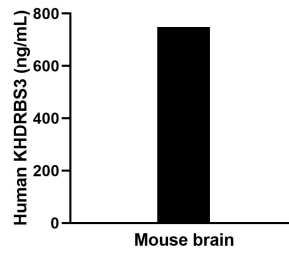
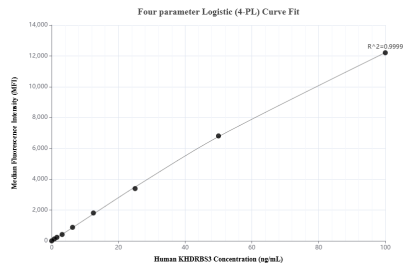
Storage

Storage:
Store at -80°C.
The product is shipped with ice packs. Upon receipt, store it immediately at -80°C
Storage buffer:
PBS only

For technical support and original validation data for this product please contact:
T: 4006900926 E: Proteintech-CN@ptglab.com W: ptgcn.com

This product is exclusively available under Proteintech Group brand and is not available to purchase from any other manufacturer.

Selected Validation Data



Cytometric bead array standard curve of MPO2486-1, KHDRBS3 Recombinant Matched Antibody Pair, PBS Only. Capture antibody: 86516-2-PBS. Detection antibody: 86516-1-PBS. Standard: Ag4438. Range: 0.781-100 ng/mL.

The mean KHDRBS3 concentration was determined to be 756.4 ng/mL in Mouse brain tissue extract based on a 7.0 mg/mL extract load.