

For Research Use Only

SIGLEC5 Recombinant Matched Antibody Pair, PBS Only



Catalog Number:MP02480-1

Capture Antibody Information

Catalog Number:
86546-2-PBS

Host:
Rabbit

Isotype:
IgG

Purification Method:
Protein A purification

Clone ID:
250743B1

Reactivity:
human

GenBank:
NM_003830.4

Immunogen Catalog Number:
Eg1673

Conjugate:
Unconjugated

Full name:
sialic acid binding Ig-like lectin 5

Gene ID:
8778

Detection Antibody Information

Catalog Number:
86546-1-PBS

Host:
Rabbit

Isotype:
IgG

Purification Method:
Protein A purification

Clone ID:
250743B9

Reactivity:
human

GenBank:
NM_003830.4

Immunogen Catalog Number:
Eg1673

Conjugate:
Unconjugated

Full name:
sialic acid binding Ig-like lectin 5

Gene ID:
8778

Applications

Tested Applications:
Sandwich ELISA

Range:
0.625-40 ng/mL (Sandwich ELISA)

Recommended Dilutions:
It is recommended that this reagent should be titrated in each testing system to obtain optimal results.

Product Information

MP02480-1 targets SIGLEC5 in immunoassays as a matched antibody pair. Validated in Sandwich ELISA.

Capture antibody: Siglec-5/CD170 Recombinant antibody, PBS Only (Capture) 86546-2-PBS (250743B1). 100 μ g. Concentration 1 mg/mL.

Detection antibody: Siglec-5/CD170 Recombinant antibody, PBS Only (Detector) 86546-1-PBS (250743B9). 100 μ g. Concentration 1 mg/mL.

Unconjugated rabbit recombinant monoclonal antibody pair in PBS only storage buffer at a concentration of 1 mg/mL, ready for conjugation. Created using Proteintech's proprietary in-house recombinant technology. Recombinant production enables unrivalled batch-to-batch consistency, easy scale-up, and future security of supply.

Matched antibody pairs are designed for use in a variety of assays and platforms that require matched antibody pairs.

Antibody use should be optimized for each application and assay.

Storage

Storage:
Store at -80°C.

The product is shipped with ice packs. Upon receipt, store it immediately at -80°C

Storage buffer:
PBS only

For technical support and original validation data for this product please contact:

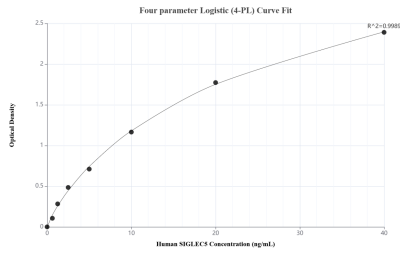
T: 4006900926

E: Proteintech-CN@ptglab.com

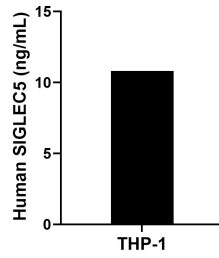
W: ptgcn.com

This product is exclusively available under Proteintech Group brand and is not available to purchase from any other manufacturer.

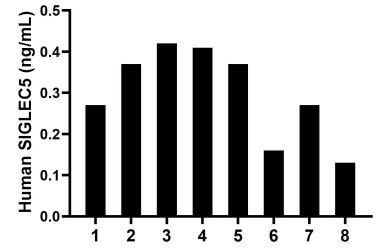
Selected Validation Data



Sandwich ELISA standard curve of MPO2480-1, Human SIGLEC5 Recombinant Matched Antibody Pair - PBS only. 86546-2-PBS was coated to a plate as the capture antibody and incubated with serial dilutions of standard Eg1673. 86546-1-PBS was HRP conjugated as the detection antibody. Range: 0.625-40 ng/mL



The mean SIGLEC5 concentration was determined to be 10.81 ng/mL in THP-1 cell extract based on a 1.20 mg/mL extract load.



Plasma of eight individual healthy human donors was measured. The SIGLEC5 concentration of detected samples was determined to be 0.30 ng/mL with a range of 0.13-0.42 ng/mL.