

CD146/MCAM Recombinant Matched Antibody Pair, PBS Only

Catalog Number: MP02466-1

Capture Antibody Information

Catalog Number:
86492-3-PBS
Host:
Rabbit
Isotype:
IgG
Purification Method:
Protein A purification

Clone ID:
250530H4
Reactivity:
human
GenBank:
NM_006500.2
Immunogen Catalog Number:
Eg2938

Conjugate:
Unconjugated
Full name:
melanoma cell adhesion molecule
Gene ID:
4162

Detection Antibody Information

Catalog Number:
86492-2-PBS
Host:
Rabbit
Isotype:
IgG
Purification Method:
Protein A purification

Clone ID:
250530A9
Reactivity:
human
GenBank:
NM_006500.2
Immunogen Catalog Number:
Eg2938

Conjugate:
Unconjugated
Full name:
melanoma cell adhesion molecule
Gene ID:
4162

Applications

Tested Applications:
Cytometric bead array

Range:
0.625-40 ng/mL (Cytometric Bead Array)

Recommended Dilutions:
It is recommended that this reagent should be titrated in each testing system to obtain optimal results.

Product Information

MP02466-1 targets CD146/MCAM in immunoassays as a matched antibody pair. Validated in Cytometric bead array.

Capture antibody: MCAM Recombinant antibody, PBS Only (Capture) 86492-3-PBS (250530H4). 100 µg. Concentration 1 mg/mL.

Detection antibody: MCAM Recombinant antibody, PBS Only (Detector) 86492-2-PBS (250530A9). 100 µg. Concentration 1 mg/mL.

Unconjugated rabbit recombinant monoclonal antibody pair in PBS only storage buffer at a concentration of 1 mg/mL, ready for conjugation. Created using Proteintech's proprietary in-house recombinant technology. Recombinant production enables unrivalled batch-to-batch consistency, easy scale-up, and future security of supply.

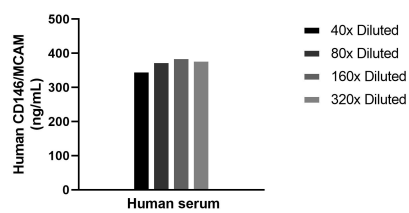
Matched antibody pairs are designed for use in a variety of assays and platforms that require matched antibody pairs.

Antibody use should be optimized for each application and assay.

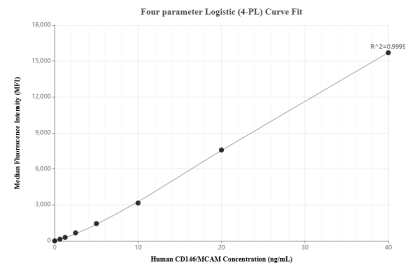
Storage

Storage:
Store at -80°C.
The product is shipped with ice packs. Upon receipt, store it immediately at -80°C
Storage buffer:
PBS only

Selected Validation Data



The mean CD146/MCAM concentration was determined to be 373.4 ng/mL in human serum.



Cytometric bead array standard curve of MP02466-1, CD146/MCAM Recombinant Matched Antibody Pair, PBS Only. Capture antibody: 86492-3-PBS. Detection antibody: 86492-2-PBS. Standard: Eg2938. Range: 0.625-40 ng/mL.