

Mouse FSTL1 Recombinant Matched Antibody Pair, PBS Only

Catalog Number: MP02461-1

Capture Antibody Information

Catalog Number:
86444-1-PBS
Host:
Rabbit
Isotype:
IgG
Purification Method:
Protein A purification

Clone ID:
251240E12
Reactivity:
mouse
GenBank:
NM_008047.5
Immunogen Catalog Number:
Eg2859

Conjugate:
Unconjugated
Full name:
follistatin-like 1
Gene ID:
14314

Detection Antibody Information

Catalog Number:
86444-2-PBS
Host:
Rabbit
Isotype:
IgG
Purification Method:
Protein A purification

Clone ID:
251240E6
Reactivity:
mouse
GenBank:
NM_008047.5
Immunogen Catalog Number:
Eg2859

Conjugate:
Unconjugated
Full name:
follistatin-like 1
Gene ID:
14314

Applications

Tested Applications:
Cytometric bead array

Range:
1.562-200 ng/mL (Cytometric Bead Array)

Recommended Dilutions:
It is recommended that this reagent should be titrated in each testing system to obtain optimal results.

Product Information

MP02461-1 targets FSTL1 in immunoassays as a matched antibody pair. Validated in Cytometric bead array.

Capture antibody: Mouse Fstl1 Recombinant antibody, PBS Only (Capture) 86444-1-PBS (251240E12). 100 µg. Concentration 1 mg/mL.

Detection antibody: Mouse Fstl1 Recombinant antibody, PBS Only (Detector) 86444-2-PBS (251240E6). 100 µg. Concentration 1 mg/mL.

Unconjugated rabbit recombinant monoclonal antibody pair in PBS only storage buffer at a concentration of 1 mg/mL, ready for conjugation. Created using Proteintech's proprietary in-house recombinant technology. Recombinant production enables unrivalled batch-to-batch consistency, easy scale-up, and future security of supply.

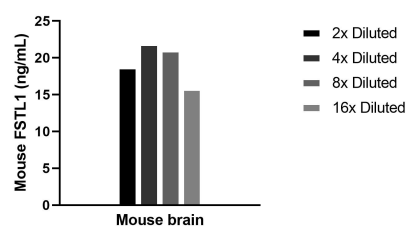
Matched antibody pairs are designed for use in a variety of assays and platforms that require matched antibody pairs.

Antibody use should be optimized for each application and assay.

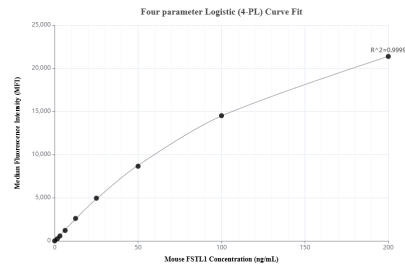
Storage

Storage:
Store at -80°C.
The product is shipped with ice packs. Upon receipt, store it immediately at -80°C
Storage buffer:
PBS only

Selected Validation Data



The mean FSTL1 concentration was determined to be 19.3 ng/mL in Mouse brain tissue extract based on a 7.0 mg/mL extract load.



Cytometric bead array standard curve of MP02461-1, MOUSE FSTL1 Recombinant Matched Antibody Pair, PBS Only. Capture antibody: 86444-1-PBS. Detection antibody: 86444-2-PBS. Standard: Eg2859. Range: 1.562-200 ng/mL.