

For Research Use Only

# UMP/CMP kinase Recombinant Matched Antibody Pair, PBS Only



Catalog Number:MP02460-1

## Capture Antibody Information

**Catalog Number:**  
86475-2-PBS  
**Host:**  
Rabbit  
**Isotype:**  
IgG  
**Purification Method:**  
Protein A purification

**Clone ID:**  
251233H8  
**Reactivity:**  
human  
**GenBank:**  
BC014961  
**Immunogen Catalog Number:**  
Ag1920

**Conjugate:**  
Unconjugated  
**Full name:**  
cytidine monophosphate (UMP-CMP) kinase 1, cytosolic  
**Gene ID:**  
51727

## Detection Antibody Information

**Catalog Number:**  
86475-1-PBS  
**Host:**  
Rabbit  
**Isotype:**  
IgG  
**Purification Method:**  
Protein A purification

**Clone ID:**  
251233D3  
**Reactivity:**  
human  
**GenBank:**  
BC014961  
**Immunogen Catalog Number:**  
Ag1920

**Conjugate:**  
Unconjugated  
**Full name:**  
cytidine monophosphate (UMP-CMP) kinase 1, cytosolic  
**Gene ID:**  
51727

## Applications

**Tested Applications:**  
Cytometric bead array, Sandwich ELISA

**Range:**  
0.781-100 ng/mL (Cytometric Bead Array)  
39.1-2500 pg/mL (Sandwich ELISA)

**Recommended Dilutions:**  
It is recommended that this reagent should be titrated in each testing system to obtain optimal results.

## Product Information

MP02460-1 targets UMP/CMP kinase in immunoassays as a matched antibody pair. Validated in Cytometric bead array, Sandwich ELISA.

Capture antibody: CMPK1 Recombinant monoclonal antibody, PBS Only (Capture) 86475-2-PBS (251233H8). 100 µg. Concentration 1 mg/mL.

Detection antibody: UMP/CMP kinase Recombinant monoclonal antibody, PBS Only (Detector) 86475-1-PBS (251233D3). 100 µg. Concentration 1 mg/mL.

Unconjugated rabbit recombinant monoclonal antibody pair in PBS only storage buffer at a concentration of 1 mg/mL, ready for conjugation. Created using Proteintech's proprietary in-house recombinant technology. Recombinant production enables unrivalled batch-to-batch consistency, easy scale-up, and future security of supply.

Matched antibody pairs are designed for use in a variety of assays and platforms that require matched antibody pairs.

Antibody use should be optimized for each application and assay.

## Storage

**Storage:**  
Store at -80°C.

**The product is shipped with ice packs. Upon receipt, store it immediately at -80°C**

**Storage buffer:**  
PBS only

For technical support and original validation data for this product please contact:

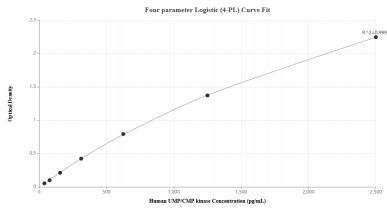
T: 4006900926

E: Proteintech-CN@ptglab.com

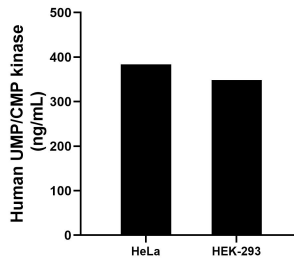
W: ptgcn.com

**This product is exclusively available under Proteintech Group brand and is not available to purchase from any other manufacturer.**

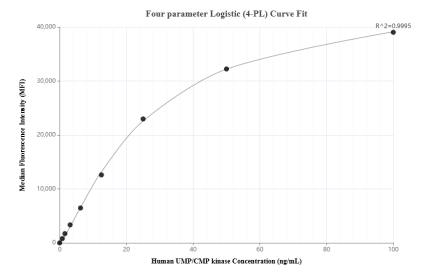
## Selected Validation Data



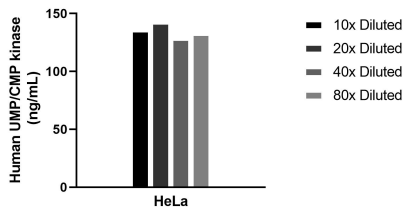
Sandwich ELISA standard curve of MP02460-1, Human UMP/CMP kinase Recombinant Matched Antibody Pair - PBS only. 86475-2-PBS was coated to a plate as the capture antibody and incubated with serial dilutions of standard Ag1920. 86475-1-PBS was HRP conjugated as the detection antibody. Range: 39.1-2500 pg/mL



The mean UMP/CMP kinase concentration was determined to be 383.79 ng/mL in HeLa cell extract based on a 1.2 mg/mL extract load and 348.74 ng/mL in HEK-293 cell extract based on a 1.2 mg/mL extract load.



Cytometric bead array standard curve of MP02460-1, UMP/CMP kinase Recombinant Matched Antibody Pair, PBS Only. Capture antibody: 86475-2-PBS. Detection antibody: 86475-1-PBS. Standard: Ag1920. Range: 0.781-100 ng/mL



The mean UMP/CMP kinase concentration was determined to be 134.2 ng/mL in HeLa cell extract based on a 1.2 mg/mL extract load.