

HSP60 Recombinant Matched Antibody Pair, PBS Only

Catalog Number: **MP02453-1**

Capture Antibody Information

Catalog Number: 86275-3-PBS	Clone ID: 250248B2	Conjugate: Unconjugated
Host: Rabbit	Reactivity: human	Full name: heat shock 60kDa protein 1 (chaperonin)
Isotype: IgG	GenBank: BC003030	Gene ID: 3329
Purification Method: Protein A purification	Immunogen Catalog Number: Ag7401	

Detection Antibody Information

Catalog Number: 86275-2-PBS	Clone ID: 250248D10	Conjugate: Unconjugated
Host: Rabbit	Reactivity: human	Full name: heat shock 60kDa protein 1 (chaperonin)
Isotype: IgG	GenBank: BC003030	Gene ID: 3329
Purification Method: Protein A purification	Immunogen Catalog Number: Ag7401	

Applications

Tested Applications: Sandwich ELISA	Range: 0.156-10 ng/mL (Sandwich ELISA)	Recommended Dilutions: It is recommended that this reagent should be titrated in each testing system to obtain optimal results.
---	--	---

Product Information

MP02453-1 targets HSP60 in immunoassays as a matched antibody pair. Validated in Sandwich ELISA.

Capture antibody: HSPD1 Recombinant antibody, PBS Only (Capture) 86275-3-PBS (250248B2). 100 µg. Concentration 1 mg/mL.

Detection antibody: HSPD1 Recombinant antibody, PBS Only (Detector) 86275-2-PBS (250248D10). 100 µg. Concentration 1 mg/mL.

Unconjugated rabbit recombinant monoclonal antibody pair in PBS only storage buffer at a concentration of 1 mg/mL, ready for conjugation. Created using Proteintech's proprietary in-house recombinant technology. Recombinant production enables unrivalled batch-to-batch consistency, easy scale-up, and future security of supply.

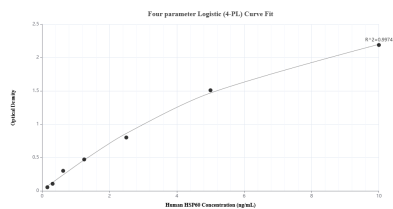
Matched antibody pairs are designed for use in a variety of assays and platforms that require matched antibody pairs.

Antibody use should be optimized for each application and assay.

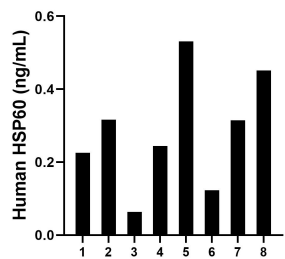
Storage

Storage:
Store at -80°C.
The product is shipped with ice packs. Upon receipt, store it immediately at -80°C
Storage buffer:
PBS only

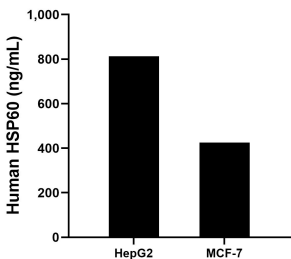
Selected Validation Data



Sandwich ELISA standard curve of MP02453-1, Human HSP60 Recombinant Matched Antibody Pair - PBS only. 86275-3-PBS was coated to a plate as the capture antibody and incubated with serial dilutions of standard Ag7401. 86275-2-PBS was HRP conjugated as the detection antibody. Range: 0.156-10 ng/mL



Plasma of eight individual healthy human donors was measured. The human HSP60 concentration of detected samples was determined to be 0.28 ng/mL with a range of 0.06 - 0.53 ng/mL



The mean TMEM66 concentration was determined to be 813.56 ng/mL in HepG2 cell extract based on a 1.1 mg/mL extract load and 425.61 ng/mL in MCF-7 cell extract based on a 1.2 mg/mL extract load.