

For Research Use Only



TMEM66 Recombinant Matched Antibody Pair, PBS Only

Catalog Number:MP02452-1

Capture Antibody Information

Catalog Number:
86350-3-PBS
Host:
Rabbit
Isotype:
IgG
Purification Method:
Protein A purification

Clone ID:
250805C3
Reactivity:
human
GenBank:
BC015012
Immunogen Catalog Number:
Ag29388

Conjugate:
Unconjugated
Full name:
transmembrane protein 66
Gene ID:
51669

Detection Antibody Information

Catalog Number:
86350-2-PBS
Host:
Rabbit
Isotype:
IgG
Purification Method:
Protein A purification

Clone ID:
250805E6
Reactivity:
human
GenBank:
BC015012
Immunogen Catalog Number:
Ag29388

Conjugate:
Unconjugated
Full name:
transmembrane protein 66
Gene ID:
51669

Applications

Tested Applications:
Sandwich ELISA

Range:
1.56-100 ng/mL (Sandwich ELISA)

Recommended Dilutions:
It is recommended that this reagent should be titrated in each testing system to obtain optimal results.

Product Information

MP02452-1 targets TMEM66 in immunoassays as a matched antibody pair. Validated in Sandwich ELISA.

Capture antibody: TMEM66 Recombinant antibody, PBS Only (Capture) 86350-3-PBS (250805C3). 100 µg. Concentration 1 mg/mL.

Detection antibody: TMEM66 Recombinant antibody, PBS Only (Detector) 86350-2-PBS (250805E6). 100 µg. Concentration 1 mg/mL.

Unconjugated rabbit recombinant monoclonal antibody pair in PBS only storage buffer at a concentration of 1 mg/mL, ready for conjugation. Created using Proteintech's proprietary in-house recombinant technology. Recombinant production enables unrivalled batch-to-batch consistency, easy scale-up, and future security of supply.

Matched antibody pairs are designed for use in a variety of assays and platforms that require matched antibody pairs.

Antibody use should be optimized for each application and assay.

Storage

Storage:
Store at -80°C.
The product is shipped with ice packs. Upon receipt, store it immediately at -80°C
Storage buffer:
PBS only

For technical support and original validation data for this product please contact:

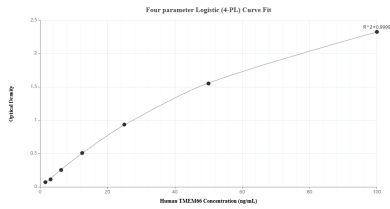
T: 4006900926

E: Proteintech-CN@ptglab.com

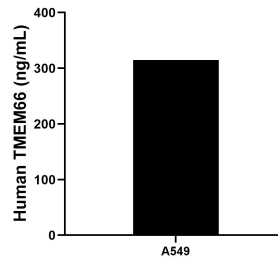
W: ptgcn.com

This product is exclusively available under Proteintech Group brand and is not available to purchase from any other manufacturer.

Selected Validation Data



Sandwich ELISA standard curve of MP02452-1, Human TMEM66 Recombinant Matched Antibody Pair - PBS only. 86350-3-PBS was coated to a plate as the capture antibody and incubated with serial dilutions of standard Ag29388. 86350-2-PBS was HRP conjugated as the detection antibody. Range: 1.56-100 ng/mL



The mean TMEM66 concentration was determined to be 314.83 ng/mL in A549 cell extract based on a 1.1 mg/mL