

Rat CD25/IL-2RA Recombinant Matched Antibody Pair, PBS Only

Catalog Number: **MP02447-1**

Capture Antibody Information

Catalog Number: 86213-1-PBS	Clone ID: 250670H3	Conjugate: Unconjugated
Host: Rabbit	Reactivity: mouse, rat	Full name: interleukin 2 receptor, alpha
Isotype: IgG	GenBank: NM_013163.1	Gene ID: 25704
Purification Method: Protein A purification	Immunogen Catalog Number: Eg1453	

Detection Antibody Information

Catalog Number: 86213-2-PBS	Clone ID: 250670E9	Conjugate: Unconjugated
Host: Rabbit	Reactivity: rat	Full name: interleukin 2 receptor, alpha
Isotype: IgG	GenBank: NM_013163.1	Gene ID: 25704
Purification Method: Protein A purification	Immunogen Catalog Number: Eg1453	

Applications

Tested Applications: Sandwich ELISA	Range: 0.156-10 ng/mL (Sandwich ELISA)	Recommended Dilutions: It is recommended that this reagent should be titrated in each testing system to obtain optimal results.
---	--	---

Product Information

MP02447-1 targets CD25/IL-2RA in immunoassays as a matched antibody pair. Validated in Sandwich ELISA.

Capture antibody: Rat CD25/IL-2R alpha Recombinant antibody, PBS Only (Capture) 86213-1-PBS (250670H3). 100 µg. Concentration 1 mg/mL.

Detection antibody: Rat CD25/IL-2R alpha Recombinant antibody, PBS Only (Detector) 86213-2-PBS (250670E9). 100 µg. Concentration 1 mg/mL.

Unconjugated rabbit recombinant monoclonal antibody pair in PBS only storage buffer at a concentration of 1 mg/mL, ready for conjugation. Created using Proteintech's proprietary in-house recombinant technology. Recombinant production enables unrivalled batch-to-batch consistency, easy scale-up, and future security of supply.

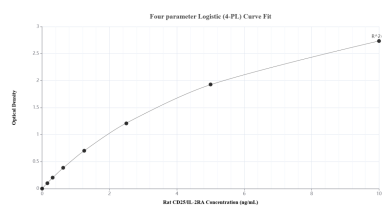
Matched antibody pairs are designed for use in a variety of assays and platforms that require matched antibody pairs.

Antibody use should be optimized for each application and assay.

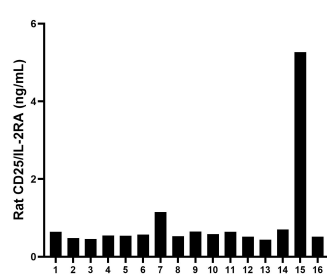
Storage

Storage:
Store at -80°C.
The product is shipped with ice packs. Upon receipt, store it immediately at -80°C
Storage buffer:
PBS only

Selected Validation Data



Sandwich ELISA standard curve of MP02447-1, Rat CD25/IL-2RA Recombinant Matched Antibody Pair - PBS only. 86213-1-PBS was coated to a plate as the capture antibody and incubated with serial dilutions of standard Eg1453. 86213-2-PBS was HRP conjugated as the detection antibody. Range: 0.156-10 ng/mL



Serum of sixteen rats was measured. The CD25/IL-2RA concentration of detected samples was determined to be 0.89 ng/mL with a range of 0.44-5.27 ng/mL