

For Research Use Only

AGO2 Recombinant Matched Antibody Pair, PBS Only



Catalog Number: MP02445-1

Capture Antibody Information

Catalog Number:
81707-4-PBS
Host:
Rabbit
Isotype:
IgG
Purification Method:
Protein A purification

Clone ID:
250686B11
Reactivity:
human
GenBank:
NM_012154

Conjugate:
Unconjugated
Full name:
eukaryotic translation initiation factor 2C, 2
Gene ID:
27161

Detection Antibody Information

Catalog Number:
81707-3-PBS
Host:
Rabbit
Isotype:
IgG
Purification Method:
Protein A purification

Clone ID:
250686E2
Reactivity:
human
GenBank:
NM_012154

Conjugate:
Unconjugated
Full name:
eukaryotic translation initiation factor 2C, 2
Gene ID:
27161

Applications

Tested Applications:
Sandwich ELISA

Range:
3.13-200 ng/mL (Sandwich ELISA)

Recommended Dilutions:
It is recommended that this reagent should be titrated in each testing system to obtain optimal results.

Product Information

MP02445-1 targets AGO2 in immunoassays as a matched antibody pair. Validated in Sandwich ELISA.

Capture antibody: EIF2C2-Specific Recombinant antibody, PBS Only (Capture) 81707-4-PBS (250686B11). 100 µg. Concentration 1 mg/mL.

Detection antibody: EIF2C2-Specific Recombinant antibody, PBS Only (Detector) 81707-3-PBS (250686E2). 100 µg. Concentration 1 mg/mL.

Unconjugated rabbit recombinant monoclonal antibody pair in PBS only storage buffer at a concentration of 1 mg/mL, ready for conjugation. Created using Proteintech's proprietary in-house recombinant technology. Recombinant production enables unrivalled batch-to-batch consistency, easy scale-up, and future security of supply.

Matched antibody pairs are designed for use in a variety of assays and platforms that require matched antibody pairs.

Antibody use should be optimized for each application and assay.

Storage

Storage:
Store at -80°C.
The product is shipped with ice packs. Upon receipt, store it immediately at -80°C
Storage buffer:
PBS only

For technical support and original validation data for this product please contact:

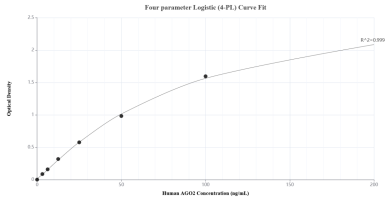
T: 4006900926

E: Proteintech-CN@ptglab.com

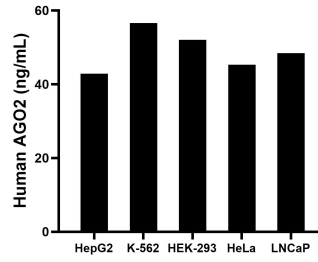
W: ptgcn.com

This product is exclusively available under Proteintech Group brand and is not available to purchase from any other manufacturer.

Selected Validation Data



Sandwich ELISA standard curve of MPO2445-1, Human AGO2 Recombinant Matched Antibody Pair - PBS only. 81707-4-PBS was coated to a plate as the capture antibody and incubated with serial dilutions of standard SY00436. 81707-3-PBS was HRP conjugated as the detection antibody. Range: 3.13-200 ng/mL.



The mean AGO2 concentration was determined to be 42.85 ng/mL in HepG2 cell extract based on a 1.10 mg/mL extract load, 56.57 ng/mL in K-562 cell extract based on a 1.40 mg/mL extract load, 52.01 ng/mL in HEK-293 cell extract based on a 2.90 mg/mL extract load, 45.27 ng/mL in HeLa cell extract based on a 1.40 mg/mL extract load and 48.44 ng/mL in LNCaP cell extract based on a 1.20 mg/mL extract load.