

CD31 Recombinant Matched Antibody Pair, PBS Only

Catalog Number: **MP02437-2**

Capture Antibody Information

Catalog Number:
80773-6-PBS
Host:
Rabbit
Isotype:
IgG
Purification Method:
Protein A purification

Clone ID:
251101A10
Reactivity:
human
GenBank:
NM_000442.5
Immunogen Catalog Number:
Eg4658

Conjugate:
Unconjugated
Full name:
platelet/endothelial cell adhesion molecule
Gene ID:
5175

Detection Antibody Information

Catalog Number:
80773-5-PBS
Host:
Rabbit
Isotype:
IgG
Purification Method:
Protein A purification

Clone ID:
251101D11
Reactivity:
human
GenBank:
NM_000442.5
Immunogen Catalog Number:
Eg4658

Conjugate:
Unconjugated
Full name:
platelet/endothelial cell adhesion molecule
Gene ID:
5175

Applications

Tested Applications:
Sandwich ELISA

Range:
0.313-20 ng/mL (Sandwich ELISA)

Recommended Dilutions:
It is recommended that this reagent should be titrated in each testing system to obtain optimal results.

Product Information

MP02437-2 targets CD31 in immunoassays as a matched antibody pair. Validated in Sandwich ELISA.

Capture antibody: CD31/PECAM-1 Recombinant antibody, PBS Only (Capture) 80773-6-PBS (251101A10). 100 µg. Concentration 1 mg/mL.

Detection antibody: CD31/PECAM-1 Recombinant antibody, PBS Only (Detector) 80773-5-PBS (251101D11). 100 µg. Concentration 1 mg/mL.

Unconjugated rabbit recombinant monoclonal antibody pair in PBS only storage buffer at a concentration of 1 mg/mL, ready for conjugation. Created using Proteintech's proprietary in-house recombinant technology. Recombinant production enables unrivalled batch-to-batch consistency, easy scale-up, and future security of supply.

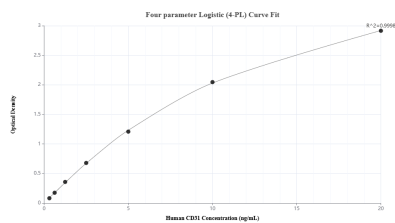
Matched antibody pairs are designed for use in a variety of assays and platforms that require matched antibody pairs.

Antibody use should be optimized for each application and assay.

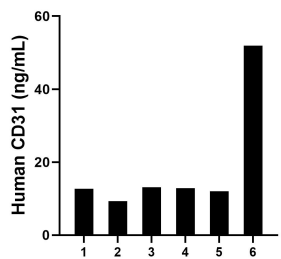
Storage

Storage:
Store at -80°C.
The product is shipped with ice packs. Upon receipt, store it immediately at -80°C
Storage buffer:
PBS only

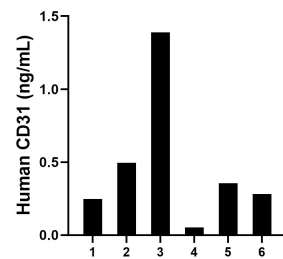
Selected Validation Data



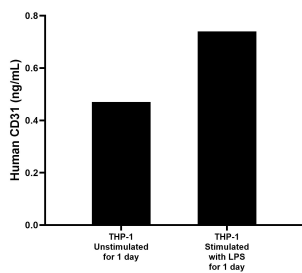
Sandwich ELISA standard curve of MP02437-2, Human CD31 Recombinant Matched Antibody Pair - PBS only. 80773-6-PBS was coated to a plate as the capture antibody and incubated with serial dilutions of standard Eg4658. 80773-5-PBS was HRP conjugated as the detection antibody. Range: 0.313-20 ng/mL



Plasma of six individual healthy human donors was measured. The human CD31 concentration of detected samples was determined to be 18.66 ng/mL with a range of 9.29 - 51.94 ng/mL.



Urine of six individual healthy human donors was measured. The human CD31 concentration of detected samples was determined to be 0.47 ng/mL with a range of 0.05 - 1.39 ng/mL.



THP-1 cells (3×10^6 cells/mL) were cultured in RPMI with 10% fetal bovine serum, 50 μ M β -mercaptoethanol, 2 mM L-glutamine, 100 U/mL penicillin, and 100 μ g/mL streptomycin sulfate. The cells were cultured unstimulated or stimulated with 1 μ g/mL LPS for 1 day. Aliquots of the cell culture supernatants were removed, assayed for levels of CD31, measured 0.47 ng/mL and 0.74 ng/mL respectively.