

# CD31 Recombinant Matched Antibody Pair, PBS Only

Catalog Number:MP02437-1

## Capture Antibody Information

Catalog Number:  
80773-3-PBS  
Host:  
Rabbit  
Isotype:  
IgG  
Purification Method:  
Protein A purification

Clone ID:  
251101B7  
Reactivity:  
human  
GenBank:  
NM\_000442.5  
Immunogen Catalog Number:  
Eg4658

Conjugate:  
Unconjugated  
Full name:  
platelet/endothelial cell adhesion molecule  
Gene ID:  
5175

## Detection Antibody Information

Catalog Number:  
80773-2-PBS  
Host:  
Rabbit  
Isotype:  
IgG  
Purification Method:  
Protein A purification

Clone ID:  
251101E2  
Reactivity:  
human  
GenBank:  
NM\_000442.5  
Immunogen Catalog Number:  
Eg4658

Conjugate:  
Unconjugated  
Full name:  
platelet/endothelial cell adhesion molecule  
Gene ID:  
5175

## Applications

Tested Applications:  
Cytometric bead array

Range:  
0.312-40 ng/mL (Cytometric Bead Array)

Recommended Dilutions:  
It is recommended that this reagent should be titrated in each testing system to obtain optimal results.

## Product Information

MP02437-1 targets CD31 in immunoassays as a matched antibody pair. Validated in Cytometric bead array.

Capture antibody: CD31/PECAM-1 Recombinant antibody, PBS Only (Capture) 80773-3-PBS (251101B7). 100 µg. Concentration 1 mg/mL.

Detection antibody: CD31/PECAM-1 Recombinant antibody, PBS Only (Detector) 80773-2-PBS (251101E2). 100 µg. Concentration 1 mg/mL.

Unconjugated rabbit recombinant monoclonal antibody pair in PBS only storage buffer at a concentration of 1 mg/mL, ready for conjugation. Created using Proteintech's proprietary in-house recombinant technology. Recombinant production enables unrivalled batch-to-batch consistency, easy scale-up, and future security of supply.

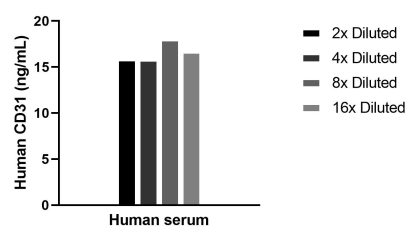
Matched antibody pairs are designed for use in a variety of assays and platforms that require matched antibody pairs.

Antibody use should be optimized for each application and assay.

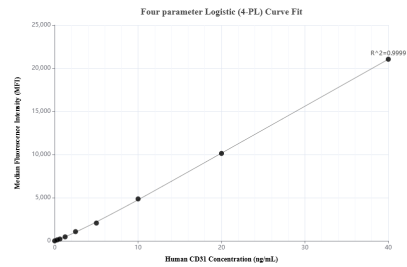
## Storage

Storage:  
Store at -80°C.  
The product is shipped with ice packs. Upon receipt, store it immediately at -80°C  
Storage buffer:  
PBS only

## Selected Validation Data



The mean CD31 concentration was determined to be 16.6 ng/mL in human serum.



Cytometric bead array standard curve of MP02437-1, CD31 Recombinant Matched Antibody Pair, PBS Only. Capture antibody: 80773-3-PBS. Detection antibody: 80773-2-PBS. Standard: Eg4658. Range: 0.312-40 ng/mL.