

For Research Use Only

MIA3 Recombinant Matched Antibody Pair, PBS Only



Catalog Number:MP02435-1

Capture Antibody Information

Catalog Number:
86403-2-PBS

Host:
Rabbit

Isotype:
IgG

Purification Method:
Protein A purification

Clone ID:
250698B9

Reactivity:
human

GenBank:
BC047116

Immunogen Catalog Number:
Ag39740

Conjugate:
Unconjugated

Full name:
melanoma inhibitory activity family,
member 3

Gene ID:
375056

Detection Antibody Information

Catalog Number:
86403-1-PBS

Host:
Rabbit

Isotype:
IgG

Purification Method:
Protein A purification

Clone ID:
250698C6

Reactivity:
human

GenBank:
BC047116

Immunogen Catalog Number:
Ag39740

Conjugate:
Unconjugated

Full name:
melanoma inhibitory activity family,
member 3

Gene ID:
375056

Applications

Tested Applications:
Cytometric bead array

Range:
0.625-20 ng/mL (Cytometric Bead
Array)

Recommended Dilutions:
It is recommended that this reagent
should be titrated in each testing
system to obtain optimal results.

Product Information

MP02435-1 targets MIA3 in immunoassays as a matched antibody pair. Validated in Cytometric bead array.

Capture antibody: MIA3 Recombinant monoclonal antibody, PBS Only (Capture) 86403-2-PBS (250698B9). 100 μ g. Concentration 1 mg/mL.

Detection antibody: MIA3 Recombinant monoclonal antibody, PBS Only (Detector) 86403-1-PBS (250698C6). 100 μ g. Concentration 1 mg/mL.

Unconjugated rabbit recombinant monoclonal antibody pair in PBS only storage buffer at a concentration of 1 mg/mL, ready for conjugation. Created using Proteintech's proprietary in-house recombinant technology. Recombinant production enables unrivalled batch-to-batch consistency, easy scale-up, and future security of supply.

Matched antibody pairs are designed for use in a variety of assays and platforms that require matched antibody pairs.

Antibody use should be optimized for each application and assay.

Storage

Storage:
Store at -80°C.

The product is shipped with ice packs. Upon receipt, store it immediately at -80°C

Storage buffer:
PBS only

For technical support and original validation data for this product please contact:

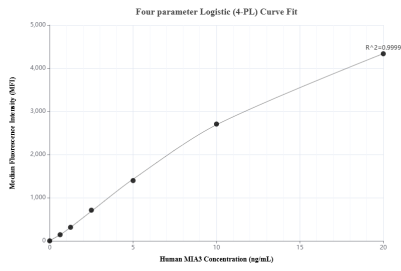
T: 4006900926

E: Proteintech-CN@ptglab.com

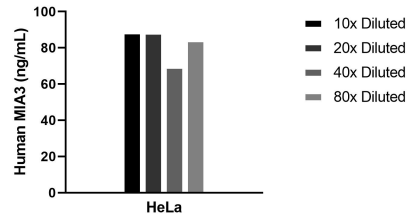
W: ptgcn.com

This product is exclusively available under Proteintech Group brand and is not available to purchase from any other manufacturer.

Selected Validation Data



Cytometric bead array standard curve of MPO2435-1, MIA3 Recombinant Matched Antibody Pair, PBS Only. Capture antibody: 86403-2-PBS. Detection antibody: 86403-1-PBS. Standard: Ag39740. Range: 0.625-20 ng/mL



The mean MIA3 concentration was determined to be 82.5 ng/mL in HeLa cell extract based on a 1.2 mg/mL extract load.