

DLK1 Recombinant Matched Antibody Pair, PBS Only

Catalog Number: **MP02426-2**

Capture Antibody Information

Catalog Number: 86410-3-PBS	Clone ID: 250840A9	Conjugate: Unconjugated
Host: Rabbit	Reactivity: human	Full name: delta-like 1 homolog (Drosophila)
Isotype: IgG	GenBank: NM_003836.6	Gene ID: 8788
Purification Method: Protein A purification	Immunogen Catalog Number: Eg2909	

Detection Antibody Information

Catalog Number: 86410-4-PBS	Clone ID: 250840C6	Conjugate: Unconjugated
Host: Rabbit	Reactivity: human	Full name: delta-like 1 homolog (Drosophila)
Isotype: IgG	GenBank: NM_003836.6	Gene ID: 8788
Purification Method: Protein A purification	Immunogen Catalog Number: Eg2909	

Applications

Tested Applications: Sandwich ELISA	Range: 97.7-6250 pg/mL (Sandwich ELISA)	Recommended Dilutions: It is recommended that this reagent should be titrated in each testing system to obtain optimal results.
---	---	---

Product Information

MP02426-2 targets DLK1 in immunoassays as a matched antibody pair. Validated in Sandwich ELISA.

Capture antibody: DLK1 Recombinant antibody, PBS Only (Capture) 86410-3-PBS (250840A9). 100 µg. Concentration 1 mg/mL.

Detection antibody: DLK1 Recombinant antibody, PBS Only (Detector) 86410-4-PBS (250840C6). 100 µg. Concentration 1 mg/mL.

Unconjugated rabbit recombinant monoclonal antibody pair in PBS only storage buffer at a concentration of 1 mg/mL, ready for conjugation. Created using Proteintech's proprietary in-house recombinant technology. Recombinant production enables unrivalled batch-to-batch consistency, easy scale-up, and future security of supply.

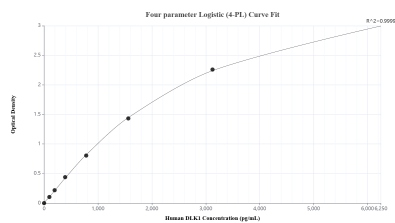
Matched antibody pairs are designed for use in a variety of assays and platforms that require matched antibody pairs.

Antibody use should be optimized for each application and assay.

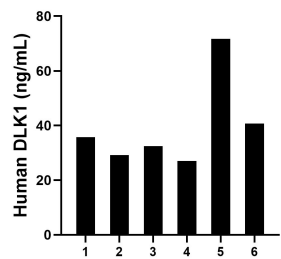
Storage

Storage:
Store at -80°C.
The product is shipped with ice packs. Upon receipt, store it immediately at -80°C
Storage buffer:
PBS only

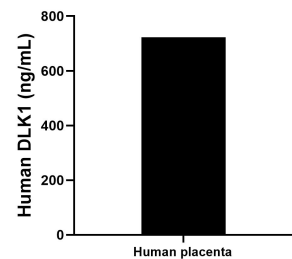
Selected Validation Data



Sandwich ELISA standard curve of MP02426-2, Human DLK1 Recombinant Matched Antibody Pair - PBS only. 86410-3-PBS was coated to a plate as the capture antibody and incubated with serial dilutions of standard Eg2909. 86410-4-PBS was HRP conjugated as the detection antibody. Range: 97.7-6250 pg/mL



Plasma of six individual healthy human donors was measured. The DLK1 concentration of detected samples was determined to be 39.48 ng/mL with a range of 27.08-71.70 ng/mL.



The mean DLK1 concentration was determined to be 722.26 ng/mL in human placenta tissue extract based on a 3.80 mg/mL extract load.