

# GDF8/Myostatin Recombinant Matched Antibody Pair, PBS Only

Catalog Number: **MP02424-1**

## Capture Antibody Information

Catalog Number: 86408-1-PBS	Clone ID: 250547A4	Conjugate: Unconjugated
Host: Rabbit	Reactivity: human	Full name: myostatin
Isotype: IgG	GenBank: BC074757	Gene ID: 2660
Purification Method: Protein A purification	Immunogen Catalog Number: Eg1972	

## Detection Antibody Information

Catalog Number: 86408-2-PBS	Clone ID: 250547D4	Conjugate: Unconjugated
Host: Rabbit	Reactivity: human	Full name: myostatin
Isotype: IgG	GenBank: BC074757	Gene ID: 2660
Purification Method: Protein A purification	Immunogen Catalog Number: Eg1972	

## Applications

Tested Applications: Cytometric bead array, Sandwich ELISA	Range: 3.125-200 ng/mL (Cytometric Bead Array) 0.156-10 ng/mL (Sandwich ELISA)	Recommended Dilutions: It is recommended that this reagent should be titrated in each testing system to obtain optimal results.
--	---	--

## Product Information

MP02424-1 targets GDF8/Myostatin in immunoassays as a matched antibody pair. Validated in Cytometric bead array, Sandwich ELISA.

Capture antibody: MSTN Recombinant monoclonal antibody, PBS Only (Capture) 86408-1-PBS (250547A4). 100 µg. Concentration 1 mg/mL.

Detection antibody: MSTN Recombinant monoclonal antibody, PBS Only (Detector) 86408-2-PBS (250547D4). 100 µg. Concentration 1 mg/mL.

Unconjugated rabbit recombinant monoclonal antibody pair in PBS only storage buffer at a concentration of 1 mg/mL, ready for conjugation. Created using Proteintech's proprietary in-house recombinant technology. Recombinant production enables unrivalled batch-to-batch consistency, easy scale-up, and future security of supply.

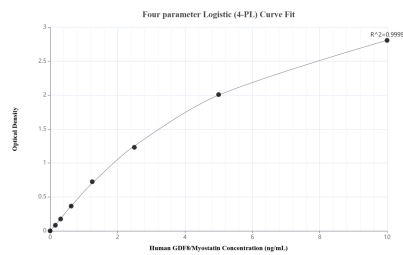
Matched antibody pairs are designed for use in a variety of assays and platforms that require matched antibody pairs.

Antibody use should be optimized for each application and assay.

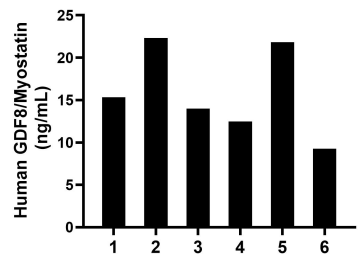
## Storage

Storage:  
Store at -80°C.  
**The product is shipped with ice packs. Upon receipt, store it immediately at -80°C**  
Storage buffer:  
PBS only

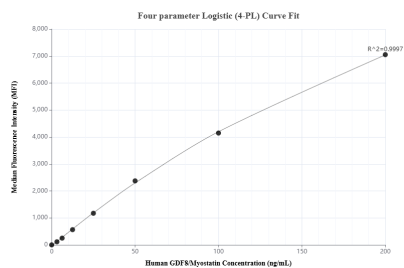
## Selected Validation Data



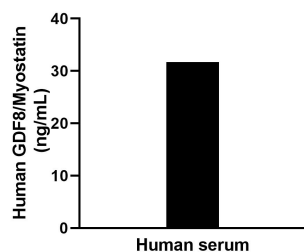
Sandwich ELISA standard curve of MP02424-1, Human GDF8/Myostatin Recombinant Matched Antibody Pair - PBS only. 86408-1-PBS was coated to a plate as the capture antibody and incubated with serial dilutions of standard Eg1972. 86408-2-PBS was HRP conjugated as the detection antibody. Range: 0.156-10 ng/mL



Plasma of six individual healthy human donors was measured. The GDF8/Myostatin concentration of detected samples was determined to be 15.87 ng/mL with a range of 9.27-22.32 ng/mL



Cytometric bead array standard curve of MP02424-1, GDF8/Myostatin Recombinant Matched Antibody Pair, PBS Only. Capture antibody: 86408-1-PBS. Detection antibody: 86408-2-PBS. Standard: Eg1972. Range: 3.125-200 ng/mL



The mean GDF8/Myostatin concentration was determined to be 32.1 ng/mL in human serum.