

GRAMD1B Recombinant Matched Antibody Pair, PBS Only

Catalog Number: MP02407-1

Capture Antibody Information

Catalog Number: 86185-1-PBS	Clone ID: 250789G5	Conjugate: Unconjugated
Host: Rabbit	Reactivity: human	Full name: GRAM domain containing 1B
Isotype: IgG	GenBank: BC107480	Gene ID: 57476
Purification Method: Protein A purification	Immunogen Catalog Number: Ag20670	

Detection Antibody Information

Catalog Number: 86185-2-PBS	Clone ID: 250789B11	Conjugate: Unconjugated
Host: Rabbit	Reactivity: human	Full name: GRAM domain containing 1B
Isotype: IgG	GenBank: BC107480	Gene ID: 57476
Purification Method: Protein A purification	Immunogen Catalog Number: Ag20670	

Applications

Tested Applications: Cytometric bead array	Range: 0.469-60 ng/mL (Cytometric Bead Array)	Recommended Dilutions: It is recommended that this reagent should be titrated in each testing system to obtain optimal results.
---	--	--

Product Information

MP02407-1 targets GRAMD1B in immunoassays as a matched antibody pair. Validated in Cytometric bead array.

Capture antibody: GRAMD1B Recombinant antibody, PBS Only (Capture) 86185-1-PBS (250789G5). 100 µg. Concentration 1 mg/mL.

Detection antibody: GRAMD1B Recombinant antibody, PBS Only (Detector) 86185-2-PBS (250789B11). 100 µg. Concentration 1 mg/mL.

Unconjugated rabbit recombinant monoclonal antibody pair in PBS only storage buffer at a concentration of 1 mg/mL, ready for conjugation. Created using Proteintech's proprietary in-house recombinant technology. Recombinant production enables unrivalled batch-to-batch consistency, easy scale-up, and future security of supply.

Matched antibody pairs are designed for use in a variety of assays and platforms that require matched antibody pairs.

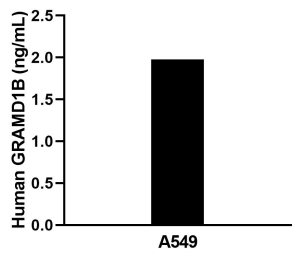
Antibody use should be optimized for each application and assay.

Storage

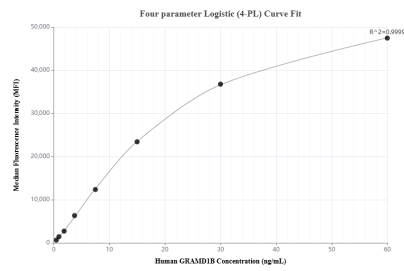
Storage:
Store at -80°C.
The product is shipped with ice packs. Upon receipt, store it immediately at -80°C

Storage buffer:
PBS only

Selected Validation Data



The mean GRAMD1B concentration was determined to be 2.0 ng/mL in A549 cell extract based on a 1.2 mg/mL extract load.



Cytometric bead array standard curve of MP02407-1, GRAMD1B Recombinant Matched Antibody Pair, PBS Only. Capture antibody: 86185-1-PBS. Detection antibody: 86185-2-PBS. Standard: Ag20670. Range: 0.469-60 ng/mL.