

For Research Use Only

Amphiregulin Recombinant Matched Antibody Pair, PBS Only



Catalog Number:MP02406-2

Capture Antibody Information

Catalog Number:
86387-3-PBS
Host:
Rabbit
Isotype:
IgG
Purification Method:
Protein A purification

Clone ID:
250996B2
Reactivity:
human
GenBank:
NM_001657.3
Immunogen Catalog Number:
Eg4569

Conjugate:
Unconjugated
Full name:
amphiregulin
Gene ID:
374

Detection Antibody Information

Catalog Number:
86387-1-PBS
Host:
Rabbit
Isotype:
IgG
Purification Method:
Protein A purification

Clone ID:
250996F2
Reactivity:
human
GenBank:
NM_001657.3
Immunogen Catalog Number:
Eg4569

Conjugate:
Unconjugated
Full name:
amphiregulin
Gene ID:
374

Applications

Tested Applications:
Sandwich ELISA

Range:
15.6-1000 pg/mL (Sandwich ELISA)

Recommended Dilutions:
It is recommended that this reagent should be titrated in each testing system to obtain optimal results.

Product Information

MP02406-2 targets Amphiregulin in immunoassays as a matched antibody pair. Validated in Sandwich ELISA.

Capture antibody: AREG Recombinant antibody, PBS Only (Capture) 86387-3-PBS (250996B2). 100 µg. Concentration 1 mg/mL.

Detection antibody: AREG Recombinant antibody, PBS Only (Detector) 86387-1-PBS (250996F2). 100 µg. Concentration 1 mg/mL.

Unconjugated rabbit recombinant monoclonal antibody pair in PBS only storage buffer at a concentration of 1 mg/mL, ready for conjugation. Created using Proteintech's proprietary in-house recombinant technology. Recombinant production enables unrivalled batch-to-batch consistency, easy scale-up, and future security of supply.

Matched antibody pairs are designed for use in a variety of assays and platforms that require matched antibody pairs.

Antibody use should be optimized for each application and assay.

Storage

Storage:
Store at -80°C.
The product is shipped with ice packs. Upon receipt, store it immediately at -80°C
Storage buffer:
PBS only

For technical support and original validation data for this product please contact:

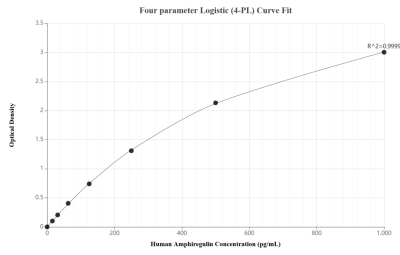
T: 4006900926

E: Proteintech-CN@ptglab.com

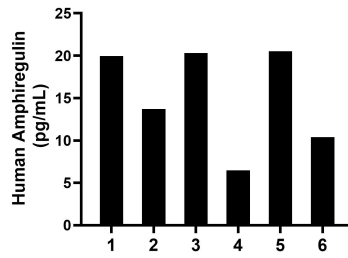
W: ptgcn.com

This product is exclusively available under Proteintech Group brand and is not available to purchase from any other manufacturer.

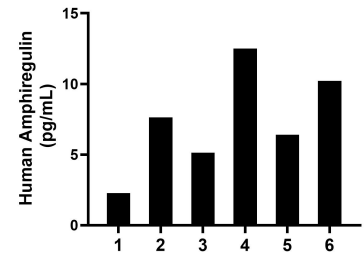
Selected Validation Data



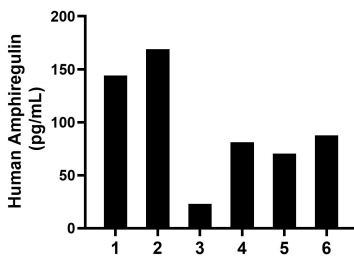
Sandwich ELISA standard curve of MP02406-2, Human Amphiregulin Recombinant Matched Antibody Pair - PBS only. 86387-3-PBS was coated to a plate as the capture antibody and incubated with serial dilutions of standard Eg4569. 86387-1-PBS was HRP conjugated as the detection antibody. Range: 15.6-1000 pg/mL



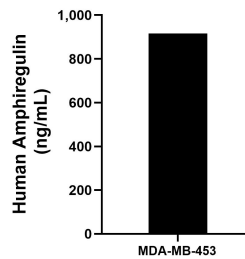
Plasma of eight individual healthy human donors was measured. The Amphiregulin concentration of detected samples was determined to be 15.22 pg/mL with a range of 6.47-20.52 pg/mL



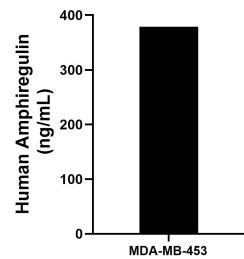
Urine of six individual healthy human donors was measured. The Amphiregulin concentration of detected samples was determined to be 7.4 ng/mL with a range of 2.3-12.5 ng/mL



Saliva of six individual healthy human donors was measured. The Amphiregulin concentration of detected samples was determined to be 95.9 ng/mL with a range of 22.9-168.9 ng/mL



MDA-MB-453 were cultured in DMEM supplemented with 10% fetal bovine serum, 2.5 mM L-glutamine, 100 U/mL penicillin, and 100 µg/mL streptomycin sulfate. An aliquot of the cell culture supernate was removed, assayed for human Amphiregulin, and measured 915.6 pg/mL



The mean Amphiregulin concentration was determined to be 378.9 ng/mL in MDA-MB-453 cell extract based on a 1.8 mg/mL extract load.