

For Research Use Only

BCL2L13 Recombinant Matched Antibody Pair, PBS Only



Catalog Number:MP02404-1

Capture Antibody Information

Catalog Number:

86183-3-PBS

Host:

Rabbit

Isotype:

IgG

Purification Method:

Protein A purification

Clone ID:

250705F8

Reactivity:

human

GenBank:

BC003032

Immunogen Catalog Number:

Ag9841

Conjugate:

Unconjugated

Full name:

BCL2-like 13 (apoptosis facilitator)

Gene ID:

23786

Detection Antibody Information

Catalog Number:

86183-2-PBS

Host:

Rabbit

Isotype:

IgG

Purification Method:

Protein A purification

Clone ID:

250705C5

Reactivity:

human

GenBank:

BC003032

Immunogen Catalog Number:

Ag9841

Conjugate:

Unconjugated

Full name:

BCL2-like 13 (apoptosis facilitator)

Gene ID:

23786

Applications

Tested Applications:

Cytometric bead array

Range:

0.781-100 ng/mL (Cytometric Bead Array)

Recommended Dilutions:

It is recommended that this reagent should be titrated in each testing system to obtain optimal results.

Product Information

MP02404-1 targets BCL2L13 in immunoassays as a matched antibody pair. Validated in Cytometric bead array.

Capture antibody: BCL2L13 Recombinant monoclonal antibody, PBS Only (Capture) 86183-3-PBS (250705F8). 100 μ g. Concentration 1 mg/ml.

Detection antibody: BCL2L13 Recombinant monoclonal antibody, PBS Only (Detector) 86183-2-PBS (250705C5). 100 μ g. Concentration 1 mg/ml.

Unconjugated rabbit recombinant monoclonal antibody pair in PBS only storage buffer at a concentration of 1 mg/mL, ready for conjugation. Created using Proteintech's proprietary in-house recombinant technology. Recombinant production enables unrivalled batch-to-batch consistency, easy scale-up, and future security of supply.

Matched antibody pairs are designed for use in a variety of assays and platforms that require matched antibody pairs.

Antibody use should be optimized for each application and assay.

Storage

Storage:

Store at -80°C.

The product is shipped with ice packs. Upon receipt, store it immediately at -80°C

Storage buffer:

PBS only

For technical support and original validation data for this product please contact:

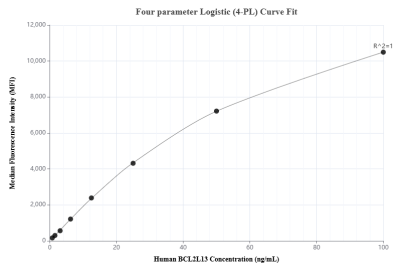
T: 4006900926

E: Proteintech-CN@ptglab.com

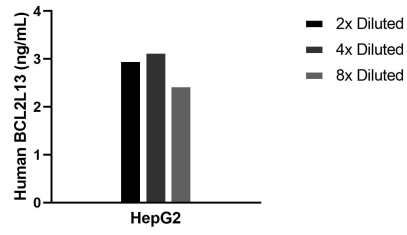
W: ptgcn.com

This product is exclusively available under Proteintech Group brand and is not available to purchase from any other manufacturer.

Selected Validation Data



Cytometric bead array standard curve of MP02404-1, BCL2L13 Recombinant Matched Antibody Pair, PBS Only. Capture antibody: 86183-3-PBS. Detection antibody: 86183-2-PBS. Standard: Ag9841. Range: 0.781-100 ng/mL



The mean BCL2L13 concentration was determined to be 2.9 ng/mL in HepG2 cell extract based on a 1.1 mg/mL extract load.