

For Research Use Only

Mouse IGFBP1 Recombinant Matched Antibody Pair, PBS Only



Catalog Number:MP02401-2

Capture Antibody Information

Catalog Number:
86385-5-PBS
Host:
Rabbit
Isotype:
IgG
Purification Method:
Protein A purification

Clone ID:
250310E7
Reactivity:
mouse
GenBank:
NM_008341.4
Immunogen Catalog Number:
Eg2934

Conjugate:
Unconjugated
Full name:
insulin-like growth factor binding protein 1
Gene ID:
16006

Detection Antibody Information

Catalog Number:
86385-4-PBS
Host:
Rabbit
Isotype:
IgG
Purification Method:
Protein A purification

Clone ID:
250310E11
Reactivity:
mouse
GenBank:
NM_008341.4
Immunogen Catalog Number:
Eg2934

Conjugate:
Unconjugated
Full name:
insulin-like growth factor binding protein 1
Gene ID:
16006

Applications

Tested Applications:
Sandwich ELISA

Range:
0.156-10 ng/mL (Sandwich ELISA)

Recommended Dilutions:
It is recommended that this reagent should be titrated in each testing system to obtain optimal results.

Product Information

MP02401-2 targets IGFBP1 in immunoassays as a matched antibody pair. Validated in Sandwich ELISA.

Capture antibody: Mouse Igfbp1 Recombinant antibody, PBS Only (Capture) 86385-5-PBS (250310E7). 100 µg. Concentration 1 mg/mL.

Detection antibody: Mouse Igfbp1 Recombinant antibody, PBS Only (Detector) 86385-4-PBS (250310E11). 100 µg. Concentration 1 mg/mL.

Unconjugated rabbit recombinant monoclonal antibody pair in PBS only storage buffer at a concentration of 1 mg/mL, ready for conjugation. Created using Proteintech's proprietary in-house recombinant technology. Recombinant production enables unrivalled batch-to-batch consistency, easy scale-up, and future security of supply.

Matched antibody pairs are designed for use in a variety of assays and platforms that require matched antibody pairs.

Antibody use should be optimized for each application and assay.

Storage

Storage:
Store at -80°C.
The product is shipped with ice packs. Upon receipt, store it immediately at -80°C
Storage buffer:
PBS only

For technical support and original validation data for this product please contact:

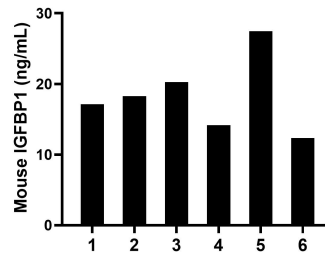
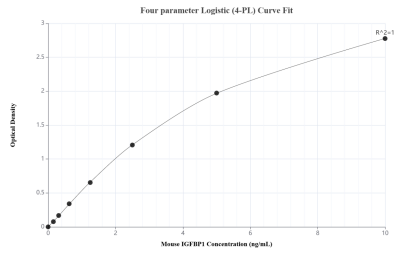
T: 4006900926

E: Proteintech-CN@ptglab.com

W: ptgcn.com

This product is exclusively available under Proteintech Group brand and is not available to purchase from any other manufacturer.

Selected Validation Data



Sandwich ELISA standard curve of MP02401-2, Mouse IGFBP1 Recombinant Matched Antibody Pair - PBS only. 86385-5-PBS was coated to a plate as the capture antibody and incubated with serial dilutions of standard Eg2934. 86385-4-PBS was HRP conjugated as the detection antibody. Range: 0.156-10 ng/mL

Serum of six mice was measured. The IGFBP1 concentration of detected samples was determined to be 18.27 ng/mL with a range of 12.34-27.45 ng/mL