

KLK9 Recombinant Matched Antibody Pair, PBS Only

Catalog Number: **MP02397-1**

Capture Antibody Information

Catalog Number: 86149-2-PBS	Clone ID: 250489F9	Conjugate: Unconjugated
Host: Rabbit	Reactivity: human	Full name: kallikrein-related peptidase 9
Isotype: IgG	GenBank: NM_012315.1	Gene ID: 284366
Purification Method: Protein A purification	Immunogen Catalog Number: Eg2779	

Detection Antibody Information

Catalog Number: 86149-1-PBS	Clone ID: 250489A5	Conjugate: Unconjugated
Host: Rabbit	Reactivity: human, mouse	Full name: kallikrein-related peptidase 9
Isotype: IgG	GenBank: NM_012315.1	Gene ID: 284366
Purification Method: Protein A purification	Immunogen Catalog Number: Eg2779	

Applications

Tested Applications: Sandwich ELISA	Range: 0.625-40 ng/mL (Sandwich ELISA)	Recommended Dilutions: It is recommended that this reagent should be titrated in each testing system to obtain optimal results.
---	--	---

Product Information

MP02397-1 targets KLK9 in immunoassays as a matched antibody pair. Validated in Sandwich ELISA.

Capture antibody: KLK9 Recombinant antibody, PBS Only (Capture) 86149-2-PBS (250489F9). 100 µg. Concentration 1 mg/mL.

Detection antibody: KLK9 Recombinant antibody, PBS Only (Detector) 86149-1-PBS (250489A5). 100 µg. Concentration 1 mg/mL.

Unconjugated rabbit recombinant monoclonal antibody pair in PBS only storage buffer at a concentration of 1 mg/mL, ready for conjugation. Created using Proteintech's proprietary in-house recombinant technology. Recombinant production enables unrivalled batch-to-batch consistency, easy scale-up, and future security of supply.

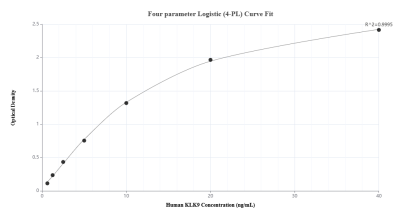
Matched antibody pairs are designed for use in a variety of assays and platforms that require matched antibody pairs.

Antibody use should be optimized for each application and assay.

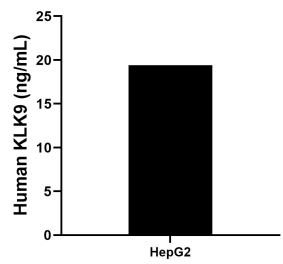
Storage

Storage:
Store at -80°C.
The product is shipped with ice packs. Upon receipt, store it immediately at -80°C
Storage buffer:
PBS only

Selected Validation Data



Sandwich ELISA standard curve of MP02397-1, Human KLK9 Recombinant Matched Antibody Pair - PBS only. 86149-2-PBS was coated to a plate as the capture antibody and incubated with serial dilutions of standard Eg2779. 86149-1-PBS was HRP conjugated as the detection antibody. Range: 0.625-40 ng/mL



The mean KLK9 concentration was determined to be 19.40 ng/mL in HepG2 cell extract based on a 1.3 mg/mL extract load.