

SNAI2/SLUG Recombinant Matched Antibody Pair, PBS Only

Catalog Number: MP02396-1

Capture Antibody Information

| | | |
|---|--|---|
| Catalog Number: 82755-5-PBS | Clone ID: 250290H8 | Conjugate: Unconjugated |
| Host: Rabbit | Reactivity: human | Full name: snail homolog 2 (Drosophila) |
| Isotype: IgG | GenBank: BC015895 | Gene ID: 6591 |
| Purification Method: Protein A purification | Immunogen Catalog Number: Ag2773 | |

Detection Antibody Information

| | | |
|---|--|---|
| Catalog Number: 82755-4-PBS | Clone ID: 250290E3 | Conjugate: Unconjugated |
| Host: Rabbit | Reactivity: human | Full name: snail homolog 2 (Drosophila) |
| Isotype: IgG | GenBank: BC015895 | Gene ID: 6591 |
| Purification Method: Protein A purification | Immunogen Catalog Number: Ag2773 | |

Applications

| | | |
|---|---|---|
| Tested Applications: Sandwich ELISA | Range: 0.78-50 ng/mL (Sandwich ELISA) | Recommended Dilutions: It is recommended that this reagent should be titrated in each testing system to obtain optimal results. |
|---|---|---|

Product Information

MP02396-1 targets SNAI2/SLUG in immunoassays as a matched antibody pair. Validated in Sandwich ELISA.

Capture antibody: SNAI2 Recombinant antibody, PBS Only (Capture) 82755-5-PBS (250290H8). 100 µg. Concentration 1 mg/mL.

Detection antibody: SNAI2 Recombinant antibody, PBS Only (Detector) 82755-4-PBS (250290E3). 100 µg. Concentration 1 mg/mL.

Unconjugated rabbit recombinant monoclonal antibody pair in PBS only storage buffer at a concentration of 1 mg/mL, ready for conjugation. Created using Proteintech's proprietary in-house recombinant technology. Recombinant production enables unrivalled batch-to-batch consistency, easy scale-up, and future security of supply.

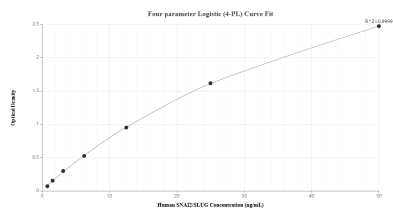
Matched antibody pairs are designed for use in a variety of assays and platforms that require matched antibody pairs.

Antibody use should be optimized for each application and assay.

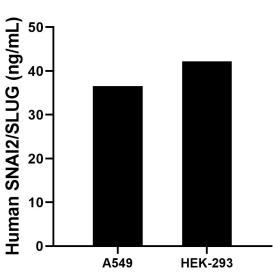
Storage

Storage:
Store at -80°C.
The product is shipped with ice packs. Upon receipt, store it immediately at -80°C
Storage buffer:
PBS only

Selected Validation Data



Sandwich ELISA standard curve of MP02396-1, Human SNAI2/SLUG Recombinant Matched Antibody Pair - PBS only. 82755-5-PBS was coated to a plate as the capture antibody and incubated with serial dilutions of standard Ag2773. 82755-4-PBS was HRP conjugated as the detection antibody. Range: 0.78-50 ng/mL



The mean SNAI2/SLUG concentration was determined to be 36.56 ng/mL in A549 cell extract based on a 1.2 mg/mL extract load and 42.23 ng/mL in HEK-293 cell extract based on a 2.2 mg/mL extract load.