

For Research Use Only

MBD2 Recombinant Matched Antibody Pair, PBS Only



Catalog Number:MP02387-1

Capture Antibody Information

Catalog Number:
86393-2-PBS

Host:
Rabbit

Isotype:
IgG

Purification Method:
Protein A purification

Clone ID:
250339G5

Reactivity:
human

GenBank:
NM_003927

Conjugate:
Unconjugated

Full name:
methyl-CpG binding domain protein 2

Gene ID:
8932

Detection Antibody Information

Catalog Number:
86393-1-PBS

Host:
Rabbit

Isotype:
IgG

Purification Method:
Protein A purification

Clone ID:
250339D8

Reactivity:
human

GenBank:
NM_003927

Conjugate:
Unconjugated

Full name:
methyl-CpG binding domain protein 2

Gene ID:
8932

Applications

Tested Applications:
Sandwich ELISA

Range:
78.1-5000 pg/mL (Sandwich ELISA)

Recommended Dilutions:
It is recommended that this reagent should be titrated in each testing system to obtain optimal results.

Product Information

MP02387-1 targets MBD2 in immunoassays as a matched antibody pair. Validated in Sandwich ELISA.

Capture antibody: MBD2 Recombinant antibody, PBS Only (Capture) 86393-2-PBS (250339G5). 100 μ g. Concentration 1 mg/mL.

Detection antibody: MBD2 Recombinant antibody, PBS Only (Detector) 86393-1-PBS (250339D8). 100 μ g. Concentration 1 mg/mL.

Unconjugated rabbit recombinant monoclonal antibody pair in PBS only storage buffer at a concentration of 1 mg/mL, ready for conjugation. Created using Proteintech's proprietary in-house recombinant technology. Recombinant production enables unrivalled batch-to-batch consistency, easy scale-up, and future security of supply.

Matched antibody pairs are designed for use in a variety of assays and platforms that require matched antibody pairs.

Antibody use should be optimized for each application and assay.

Storage

Storage:
Store at -80°C.

The product is shipped with ice packs. Upon receipt, store it immediately at -80°C

Storage buffer:
PBS only

For technical support and original validation data for this product please contact:

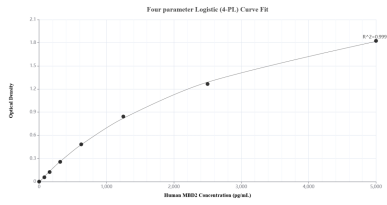
T: 4006900926

E: Proteintech-CN@ptglab.com

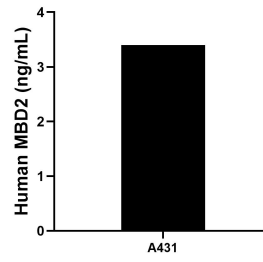
W: ptgcn.com

This product is exclusively available under Proteintech Group brand and is not available to purchase from any other manufacturer.

Selected Validation Data



Sandwich ELISA standard curve of MP02387-1, Human MBD2 Recombinant Matched Antibody Pair - PBS only. 86393-2-PBS was coated to a plate as the capture antibody and incubated with serial dilutions of standard SY01263. 86393-1-PBS was HRP conjugated as the detection antibody. Range: 78.1-5000 pg/mL.



The mean MBD2 concentration was determined to be 3.4 ng/mL in A431 cell extract based on a 3.7 mg/mL extract load.