

RTN2 Recombinant Matched Antibody Pair, PBS Only

Catalog Number:MP02385-1

Capture Antibody Information

Catalog Number:
86162-1-PBS
Host:
Rabbit
Isotype:
IgG
Purification Method:
Protein A purification

Clone ID:
250823C1
Reactivity:
human, mouse, rat
GenBank:
BC014244
Immunogen Catalog Number:
Ag1655

Conjugate:
Unconjugated
Full name:
reticulon 2
Gene ID:
6253

Detection Antibody Information

Catalog Number:
86162-2-PBS
Host:
Rabbit
Isotype:
IgG
Purification Method:
Protein A purification

Clone ID:
250823D10
Reactivity:
human
GenBank:
BC014244
Immunogen Catalog Number:
Ag1655

Conjugate:
Unconjugated
Full name:
reticulon 2
Gene ID:
6253

Applications

Tested Applications:
Cytometric bead array

Range:
0.469-60 ng/mL (Cytometric Bead Array)

Recommended Dilutions:
It is recommended that this reagent should be titrated in each testing system to obtain optimal results.

Product Information

MP02385-1 targets RTN2 in immunoassays as a matched antibody pair. Validated in Cytometric bead array.

Capture antibody: RTN2 Recombinant antibody, PBS Only (Capture) 86162-1-PBS (250823C1). 100 µg. Concentration 1 mg/mL.

Detection antibody: RTN2 Recombinant antibody, PBS Only (Detector) 86162-2-PBS (250823D10). 100 µg. Concentration 1 mg/mL.

Unconjugated rabbit recombinant monoclonal antibody pair in PBS only storage buffer at a concentration of 1 mg/mL, ready for conjugation. Created using Proteintech's proprietary in-house recombinant technology. Recombinant production enables unrivalled batch-to-batch consistency, easy scale-up, and future security of supply.

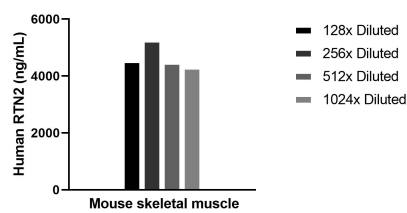
Matched antibody pairs are designed for use in a variety of assays and platforms that require matched antibody pairs.

Antibody use should be optimized for each application and assay.

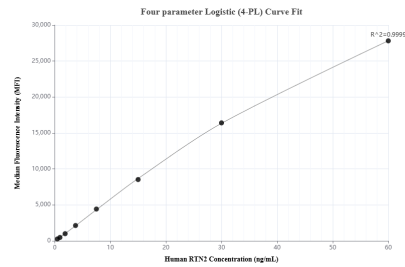
Storage

Storage:
Store at -80°C.
The product is shipped with ice packs. Upon receipt, store it immediately at -80°C
Storage buffer:
PBS only

Selected Validation Data



The mean RTN2 concentration was determined to be 4623.0 ng/mL in Mouse skeletal muscle tissue extract based on a 4.1 mg/mL extract load.



Cytometric bead array standard curve of MP02385-1, RTN2 Recombinant Matched Antibody Pair, PBS Only. Capture antibody: 86162-1-PBS. Detection antibody: 86162-2-PBS. Standard: Ag1655. Range: 0.469-60 ng/mL.