

For Research Use Only

OXR1 Recombinant Matched Antibody Pair, PBS Only



Catalog Number:MP02376-2

Capture Antibody Information

Catalog Number:
86359-2-PBS

Host:
Rabbit

Isotype:
IgG

Purification Method:
Protein A purification

Clone ID:
251027G2

Reactivity:
human

GenBank:
BC032710

Immunogen Catalog Number:
Ag4439

Conjugate:
Unconjugated

Full name:
oxidation resistance 1

Gene ID:
55074

Detection Antibody Information

Catalog Number:
86359-3-PBS

Host:
Rabbit

Isotype:
IgG

Purification Method:
Protein A purification

Clone ID:
251027B10

Reactivity:
human, mouse, rat

GenBank:
BC032710

Immunogen Catalog Number:
Ag4439

Conjugate:
Unconjugated

Full name:
oxidation resistance 1

Gene ID:
55074

Applications

Tested Applications:
Sandwich ELISA

Range:
15.6-1000 pg/mL (Sandwich ELISA)

Recommended Dilutions:
It is recommended that this reagent should be titrated in each testing system to obtain optimal results.

Product Information

MP02376-2 targets OXR1 in immunoassays as a matched antibody pair. Validated in Sandwich ELISA.

Capture antibody: OXR1 Recombinant monoclonal antibody, PBS Only (Capture) 86359-2-PBS (251027G2). 100 μ g. Concentration 1 mg/mL.

Detection antibody: OXR1 Recombinant monoclonal antibody, PBS Only (Detector) 86359-3-PBS (251027B10). 100 μ g. Concentration 1 mg/mL.

Unconjugated rabbit recombinant monoclonal antibody pair in PBS only storage buffer at a concentration of 1 mg/mL, ready for conjugation. Created using Proteintech's proprietary in-house recombinant technology. Recombinant production enables unrivalled batch-to-batch consistency, easy scale-up, and future security of supply.

Matched antibody pairs are designed for use in a variety of assays and platforms that require matched antibody pairs.

Antibody use should be optimized for each application and assay.

Storage

Storage:
Store at -80°C.

The product is shipped with ice packs. Upon receipt, store it immediately at -80°C

Storage buffer:
PBS only

For technical support and original validation data for this product please contact:

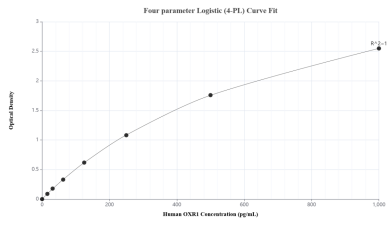
T: 4006900926

E: Proteintech-CN@ptglab.com

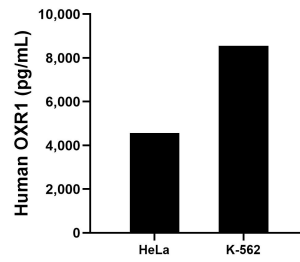
W: ptgcn.com

This product is exclusively available under Proteintech Group brand and is not available to purchase from any other manufacturer.

Selected Validation Data



Sandwich ELISA standard curve of MP02376-2, Human OXR1 Recombinant Matched Antibody Pair - PBS only. 86359-2-PBS was coated to a plate as the capture antibody and incubated with serial dilutions of standard Ag4439. 86359-3-PBS was HRP conjugated as the detection antibody. Range: 15.6-1000 pg/mL



The mean OXR1 concentration was determined to be 4,564.2 pg/mL in HeLa cell extract based on a 1.2 mg/mL extract load and 8,560.2 pg/mL in K-562 cell extract based on a 1.2 mg/mL extract load.