

For Research Use Only



A2ML1 Recombinant Matched Antibody Pair, PBS Only

Catalog Number:MP02375-1

Capture Antibody Information

Catalog Number:
86234-3-PBS
Host:
Rabbit
Isotype:
IgG
Purification Method:
Protein A purification

Clone ID:
250995C6
Reactivity:
human
GenBank:
Immunogen Catalog Number:
Eg4523

Conjugate:
Unconjugated
Full name:
alpha-2-macroglobulin-like 1
Gene ID:
144568

Detection Antibody Information

Catalog Number:
86234-2-PBS
Host:
Rabbit
Isotype:
IgG
Purification Method:
Protein A purification

Clone ID:
250995B1
Reactivity:
human
GenBank:
Immunogen Catalog Number:
Eg4523

Conjugate:
Unconjugated
Full name:
alpha-2-macroglobulin-like 1
Gene ID:
144568

Applications

Tested Applications:
Cytometric bead array

Range:
1.562-200 ng/mL (Cytometric Bead Array)

Recommended Dilutions:
It is recommended that this reagent should be titrated in each testing system to obtain optimal results.

Product Information

MP02375-1 targets A2ML1 in immunoassays as a matched antibody pair. Validated in Cytometric bead array.

Capture antibody: alpha 2-Macroglobulin-like 1 Recombinant antibody, PBS Only (Capture) 86234-3-PBS (250995C6). 100 µg. Concentration 1 mg/mL.

Detection antibody: alpha 2-Macroglobulin-like 1 Recombinant antibody, PBS Only (Detector) 86234-2-PBS (250995B1). 100 µg. Concentration 1 mg/mL.

Unconjugated rabbit recombinant monoclonal antibody pair in PBS only storage buffer at a concentration of 1 mg/mL, ready for conjugation. Created using Proteintech's proprietary in-house recombinant technology. Recombinant production enables unrivalled batch-to-batch consistency, easy scale-up, and future security of supply.

Matched antibody pairs are designed for use in a variety of assays and platforms that require matched antibody pairs.

Antibody use should be optimized for each application and assay.

Storage

Storage:
Store at -80°C.
The product is shipped with ice packs. Upon receipt, store it immediately at -80°C
Storage buffer:
PBS only

For technical support and original validation data for this product please contact:

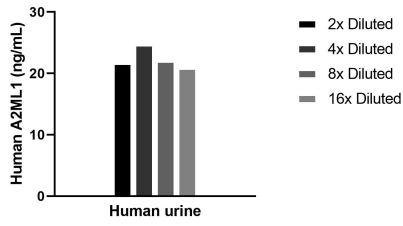
T: 4006900926

E: Proteintech-CN@ptglab.com

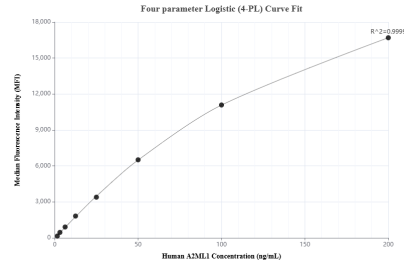
W: ptgcn.com

This product is exclusively available under Proteintech Group brand and is not available to purchase from any other manufacturer.

Selected Validation Data



The mean A2ML1 concentration was determined to be 22.3 ng/mL in human urine.



Cytometric bead array standard curve of MP02375-1, A2ML1 Recombinant Matched Antibody Pair, PBS Only. Capture antibody: 86234-3-PBS. Detection antibody: 86234-2-PBS. Standard: Eg4523. Range: 1.562-200 ng/mL