

For Research Use Only

CDK12/CRKRS Recombinant Matched Antibody Pair, PBS Only



Catalog Number:MP02374-1

Capture Antibody Information

Catalog Number:
86296-2-PBS
Host:
Rabbit
Isotype:
IgG
Purification Method:
Protein A purification

Clone ID:
250880H4
Reactivity:
human
GenBank:
BC150265
Immunogen Catalog Number:
Ag25312

Conjugate:
Unconjugated
Full name:
Cdc2-related kinase, arginine/serine-rich
Gene ID:
51755

Detection Antibody Information

Catalog Number:
86296-1-PBS
Host:
Rabbit
Isotype:
IgG
Purification Method:
Protein A purification

Clone ID:
250880C11
Reactivity:
human
GenBank:
BC150265
Immunogen Catalog Number:
Ag25312

Conjugate:
Unconjugated
Full name:
Cdc2-related kinase, arginine/serine-rich
Gene ID:
51755

Applications

Tested Applications:
Cytometric bead array

Range:
0.781-100 ng/mL (Cytometric Bead Array)

Recommended Dilutions:
It is recommended that this reagent should be titrated in each testing system to obtain optimal results.

Product Information

MP02374-1 targets CDK12/CRKRS in immunoassays as a matched antibody pair. Validated in Cytometric bead array.

Capture antibody: CRKRS Recombinant monoclonal antibody, PBS Only (Capture) 86296-2-PBS (250880H4). 100 µg. Concentration 1 mg/mL.

Detection antibody: CRKRS Recombinant monoclonal antibody, PBS Only (Detector) 86296-1-PBS (250880C11). 100 µg. Concentration 1 mg/mL.

Unconjugated rabbit recombinant monoclonal antibody pair in PBS only storage buffer at a concentration of 1 mg/mL, ready for conjugation. Created using Proteintech's proprietary in-house recombinant technology. Recombinant production enables unrivalled batch-to-batch consistency, easy scale-up, and future security of supply.

Matched antibody pairs are designed for use in a variety of assays and platforms that require matched antibody pairs.

Antibody use should be optimized for each application and assay.

Storage

Storage:
Store at -80°C.
The product is shipped with ice packs. Upon receipt, store it immediately at -80°C
Storage buffer:
PBS only

For technical support and original validation data for this product please contact:

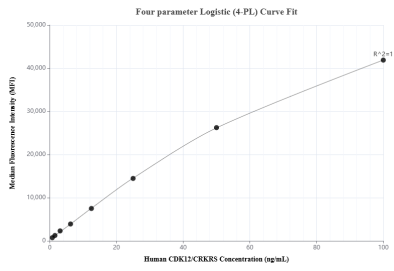
T: 4006900926

E: Proteintech-CN@ptglab.com

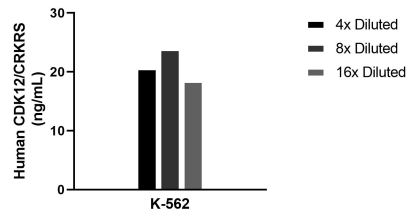
W: ptgcn.com

This product is exclusively available under Proteintech Group brand and is not available to purchase from any other manufacturer.

Selected Validation Data



Cytometric bead array standard curve of MP02374-1, CDK12/CRKRS Recombinant Matched Antibody Pair, PBS Only. Capture antibody: 86296-2-PBS. Detection antibody: 86296-1-PBS. Standard: Ag25312. Range: 0.781-100 ng/mL



The mean CDK12/CRKRS concentration was determined to be 20.9 ng/mL in K-562 cell extract based on a 3.0 mg/mL extract load.