

# IL-13RA2 Recombinant Matched Antibody Pair, PBS Only

Catalog Number: **MP02369-2**

## Capture Antibody Information

<b>Catalog Number:</b> 86298-3-PBS	<b>Clone ID:</b> 250952D9	<b>Conjugate:</b> Unconjugated
<b>Host:</b> Rabbit	<b>Reactivity:</b> human	<b>Full name:</b> interleukin 13 receptor, alpha 2
<b>Isotype:</b> IgG	<b>GenBank:</b> BC020739	<b>Gene ID:</b> 3598
<b>Purification Method:</b> Protein A purification	<b>Immunogen Catalog Number:</b> Eg2579	

## Detection Antibody Information

<b>Catalog Number:</b> 86298-1-PBS	<b>Clone ID:</b> 250952G5	<b>Conjugate:</b> Unconjugated
<b>Host:</b> Rabbit	<b>Reactivity:</b> human	<b>Full name:</b> interleukin 13 receptor, alpha 2
<b>Isotype:</b> IgG	<b>GenBank:</b> BC020739	<b>Gene ID:</b> 3598
<b>Purification Method:</b> Protein A purification	<b>Immunogen Catalog Number:</b> Eg2579	

## Applications

<b>Tested Applications:</b> Sandwich ELISA	<b>Range:</b> 78.1-5000 pg/mL (Sandwich ELISA)	<b>Recommended Dilutions:</b> It is recommended that this reagent should be titrated in each testing system to obtain optimal results.
---	---	---

## Product Information

MP02369-2 targets IL-13RA2 in immunoassays as a matched antibody pair. Validated in Sandwich ELISA.

Capture antibody: IL13RA2,CD213A2 Recombinant antibody, PBS Only (Capture) 86298-3-PBS (250952D9). 100 µg. Concentration 1 mg/mL.

Detection antibody: IL13RA2,CD213A2 Recombinant antibody, PBS Only (Detector) 86298-1-PBS (250952G5). 100 µg. Concentration 1 mg/mL.

Unconjugated rabbit recombinant monoclonal antibody pair in PBS only storage buffer at a concentration of 1 mg/mL, ready for conjugation. Created using Proteintech's proprietary in-house recombinant technology. Recombinant production enables unrivalled batch-to-batch consistency, easy scale-up, and future security of supply.

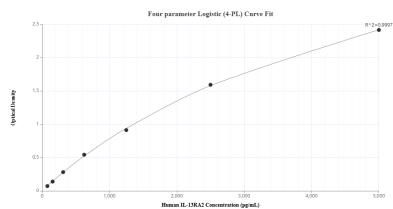
Matched antibody pairs are designed for use in a variety of assays and platforms that require matched antibody pairs.

Antibody use should be optimized for each application and assay.

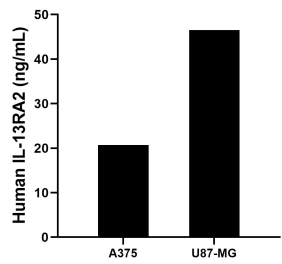
## Storage

**Storage:**  
Store at -80°C.  
**The product is shipped with ice packs. Upon receipt, store it immediately at -80°C**  
**Storage buffer:**  
PBS only

## Selected Validation Data



Sandwich ELISA standard curve of MP02369-2, Human IL-13RA2 Recombinant Matched Antibody Pair - PBS only. 86298-3-PBS was coated to a plate as the capture antibody and incubated with serial dilutions of standard Eg2579. 86298-1-PBS was HRP conjugated as the detection antibody. Range: 78.1-5000 pg/mL



A375 cells and U87-MG cells were cultured in DMEM supplemented with 10% fetal bovine serum, 2.5 mM L-glutamine, 100 U/mL penicillin, and 100  $\mu$ g/mL streptomycin sulfate. An aliquot of the cell culture supernatants was removed, assayed for human IL-13RA2, and measured 20.73 and 46.54 ng/mL respectively.