

LCP1 Recombinant Matched Antibody Pair, PBS Only

Catalog Number:MP02368-1

Capture Antibody Information

Catalog Number:
86299-2-PBS

Host:
Rabbit

Isotype:
IgG

Purification Method:
Protein A purification

Clone ID:
251063E1

Reactivity:
human

GenBank:
BC010271

Immunogen Catalog Number:
Ag3571

Conjugate:
Unconjugated

Full name:
lymphocyte cytosolic protein 1 (L-plastin)

Gene ID:
3936

Detection Antibody Information

Catalog Number:
86299-1-PBS

Host:
Rabbit

Isotype:
IgG

Purification Method:
Protein A purification

Clone ID:
251063C4

Reactivity:
human

GenBank:
BC010271

Immunogen Catalog Number:
Ag3571

Conjugate:
Unconjugated

Full name:
lymphocyte cytosolic protein 1 (L-plastin)

Gene ID:
3936

Applications

Tested Applications:
Cytometric bead array

Range:
0.469-60 ng/mL (Cytometric Bead Array)

Recommended Dilutions:
It is recommended that this reagent should be titrated in each testing system to obtain optimal results.

Product Information

MP02368-1 targets LCP1 in immunoassays as a matched antibody pair. Validated in Cytometric bead array.

Capture antibody: LCP1 Recombinant antibody, PBS Only (Capture) 86299-2-PBS (251063E1). 100 µg. Concentration 1 mg/mL.

Detection antibody: LCP1 Recombinant antibody, PBS Only (Detector) 86299-1-PBS (251063C4). 100 µg. Concentration 1 mg/mL.

Unconjugated rabbit recombinant monoclonal antibody pair in PBS only storage buffer at a concentration of 1 mg/mL, ready for conjugation. Created using Proteintech's proprietary in-house recombinant technology. Recombinant production enables unrivalled batch-to-batch consistency, easy scale-up, and future security of supply.

Matched antibody pairs are designed for use in a variety of assays and platforms that require matched antibody pairs.

Antibody use should be optimized for each application and assay.

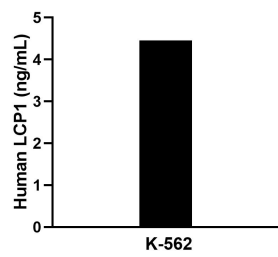
Storage

Storage:
Store at -80°C.

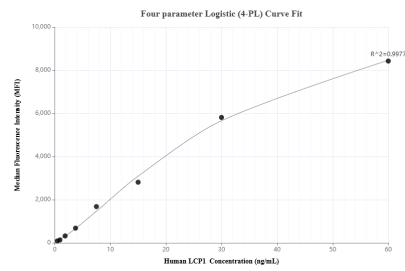
The product is shipped with ice packs. Upon receipt, store it immediately at -80°C

Storage buffer:
PBS only

Selected Validation Data



The mean LCP1 concentration was determined to be 4.5 ng/mL in K-562 cell extract based on a 3.0 mg/mL extract load.



Cytometric bead array standard curve of MP02368-1, LCP1 Recombinant Matched Antibody Pair, PBS Only. Capture antibody: 86299-2-PBS. Detection antibody: 86299-1-PBS. Standard: Ag3571. Range: 0.469-60 ng/mL.