

For Research Use Only

Mouse CCL11/Eotaxin Recombinant Matched Antibody Pair, PBS Only



Catalog Number:MP02367-1

Capture Antibody Information

Catalog Number:
86339-2-PBS
Host:
Rabbit
Isotype:
IgG
Purification Method:
Protein A purification

Clone ID:
243012F8
Reactivity:
mouse
GenBank:
NM_011330
Immunogen Catalog Number:
Eg2400

Conjugate:
Unconjugated
Full name:
chemokine (C-C motif) ligand 11
Gene ID:
20292

Detection Antibody Information

Catalog Number:
86339-1-PBS
Host:
Rabbit
Isotype:
IgG
Purification Method:
Protein A purification

Clone ID:
243012G7
Reactivity:
mouse
GenBank:
NM_011330
Immunogen Catalog Number:
Eg2400

Conjugate:
Unconjugated
Full name:
chemokine (C-C motif) ligand 11
Gene ID:
20292

Applications

Tested Applications:
Sandwich ELISA

Range:
78.1-5000 pg/mL (Sandwich ELISA)

Recommended Dilutions:
It is recommended that this reagent should be titrated in each testing system to obtain optimal results.

Product Information

MP02367-1 targets CCL11/Eotaxin in immunoassays as a matched antibody pair. Validated in Sandwich ELISA.

Capture antibody: Mouse Ccl11 Recombinant antibody, PBS Only (Capture) 86339-2-PBS (243012F8). 100 µg. Concentration 1 mg/mL.

Detection antibody: Mouse Ccl11 Recombinant antibody, PBS Only (Detector) 86339-1-PBS (243012G7). 100 µg. Concentration 1 mg/mL.

Unconjugated rabbit recombinant monoclonal antibody pair in PBS only storage buffer at a concentration of 1 mg/mL, ready for conjugation. Created using Proteintech's proprietary in-house recombinant technology. Recombinant production enables unrivalled batch-to-batch consistency, easy scale-up, and future security of supply.

Matched antibody pairs are designed for use in a variety of assays and platforms that require matched antibody pairs.

Antibody use should be optimized for each application and assay.

Storage

Storage:
Store at -80°C.
The product is shipped with ice packs. Upon receipt, store it immediately at -80°C
Storage buffer:
PBS only

For technical support and original validation data for this product please contact:

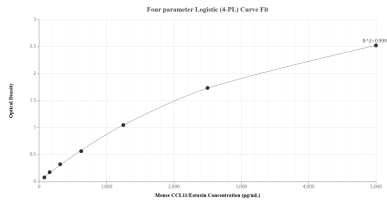
T: 4006900926

E: Proteintech-CN@ptglab.com

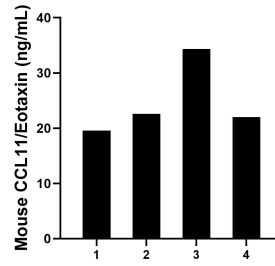
W: ptgcn.com

This product is exclusively available under Proteintech Group brand and is not available to purchase from any other manufacturer.

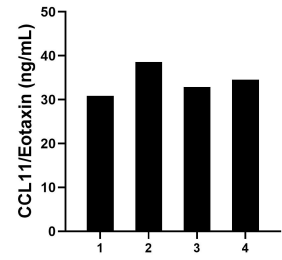
Selected Validation Data



Sandwich ELISA standard curve of MP02367-1, Mouse CCL11/Eotaxin Recombinant Matched Antibody Pair - PBS only. 86339-2-PBS was coated to a plate as the capture antibody and incubated with serial dilutions of standard Eg2400. 86339-1-PBS was HRP conjugated as the detection antibody. Range: 78.1-5000 pg/mL



Serum of four mice was measured. The CCL11/Eotaxin concentration of detected samples was determined to be 24.6 pg/mL with a range of 19.6-34.3 pg/mL.



Serum of four rats was measured. The CCL11/Eotaxin concentration of detected samples was determined to be 34.2 pg/mL with a range of 30.9-38.6 pg/mL.