

GlnRS Recombinant Matched Antibody Pair, PBS Only

Catalog Number: MP02363-1

Capture Antibody Information

Catalog Number:
86333-2-PBS
Host:
Rabbit
Isotype:
IgG
Purification Method:
Protein A purification

Clone ID:
251052F11
Reactivity:
human
GenBank:
BC016634
Immunogen Catalog Number:
Ag3375

Conjugate:
Unconjugated
Full name:
glutaminyL-tRNA synthetase
Gene ID:
5859

Detection Antibody Information

Catalog Number:
86333-1-PBS
Host:
Rabbit
Isotype:
IgG
Purification Method:
Protein A purification

Clone ID:
251052C4
Reactivity:
human
GenBank:
BC016634
Immunogen Catalog Number:
Ag3375

Conjugate:
Unconjugated
Full name:
glutaminyL-tRNA synthetase
Gene ID:
5859

Applications

Tested Applications:
Cytometric bead array

Range:
0.781-100 ng/mL (Cytometric Bead Array)

Recommended Dilutions:
It is recommended that this reagent should be titrated in each testing system to obtain optimal results.

Product Information

MP02363-1 targets GlnRS in immunoassays as a matched antibody pair. Validated in Cytometric bead array.

Capture antibody: QARS Recombinant antibody, PBS Only (Capture) 86333-2-PBS (251052F11). 100 µg. Concentration 1 mg/mL.

Detection antibody: QARS Recombinant antibody, PBS Only (Detector) 86333-1-PBS (251052C4). 100 µg. Concentration 1 mg/mL.

Unconjugated rabbit recombinant monoclonal antibody pair in PBS only storage buffer at a concentration of 1 mg/mL, ready for conjugation. Created using Proteintech's proprietary in-house recombinant technology. Recombinant production enables unrivalled batch-to-batch consistency, easy scale-up, and future security of supply.

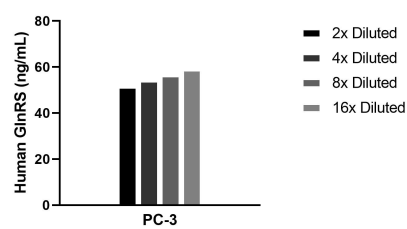
Matched antibody pairs are designed for use in a variety of assays and platforms that require matched antibody pairs.

Antibody use should be optimized for each application and assay.

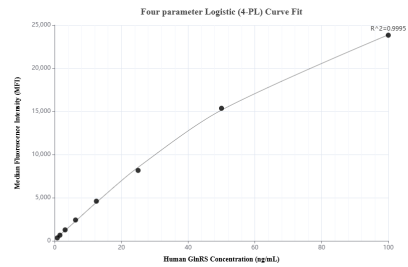
Storage

Storage:
Store at -80°C.
The product is shipped with ice packs. Upon receipt, store it immediately at -80°C
Storage buffer:
PBS only

Selected Validation Data



The mean GlnRS concentration was determined to be 55.2 ng/mL in PC-3 cell extract based on a 1.6 mg/mL extract load.



Cytometric bead array standard curve of MP02363-1, GlnRS Recombinant Matched Antibody Pair, PBS Only. Capture antibody: 86333-2-PBS. Detection antibody: 86333-1-PBS. Standard: Ag3375. Range: 0.781-100 ng/mL.