

# Mouse CD107a / LAMP1

## Recombinant Matched Antibody Pair, PBS Only

Catalog Number: **MP02362-1**

### Capture Antibody Information

**Catalog Number:**  
86337-2-PBS

**Host:**  
Rabbit

**Isotype:**  
IgG

**Purification Method:**  
Protein A purification

**Clone ID:**  
250972C12

**Reactivity:**  
mouse

**GenBank:**  
NM\_010684.3

**Immunogen Catalog Number:**  
Eg3858

**Conjugate:**  
Unconjugated

**Full name:**  
lysosomal-associated membrane protein 1

**Gene ID:**  
16783

### Detection Antibody Information

**Catalog Number:**  
86337-1-PBS

**Host:**  
Rabbit

**Isotype:**  
IgG

**Purification Method:**  
Protein A purification

**Clone ID:**  
250972H2

**Reactivity:**  
mouse

**GenBank:**  
NM\_010684.3

**Immunogen Catalog Number:**  
Eg3858

**Conjugate:**  
Unconjugated

**Full name:**  
lysosomal-associated membrane protein 1

**Gene ID:**  
16783

### Applications

**Tested Applications:**  
Cytometric bead array

**Range:**  
0.625-80 ng/mL (Cytometric Bead Array)

**Recommended Dilutions:**  
It is recommended that this reagent should be titrated in each testing system to obtain optimal results.

### Product Information

MP02362-1 targets CD107a / LAMP1 in immunoassays as a matched antibody pair. Validated in Cytometric bead array.

Capture antibody: Mouse LAMP-1/CD107a Recombinant antibody, PBS Only (Capture) 86337-2-PBS (250972C12). 100 µg. Concentration 1 mg/mL.

Detection antibody: Mouse LAMP-1/CD107a Recombinant antibody, PBS Only (Detector) 86337-1-PBS (250972H2). 100 µg. Concentration 1 mg/mL.

Unconjugated rabbit recombinant monoclonal antibody pair in PBS only storage buffer at a concentration of 1 mg/mL, ready for conjugation. Created using Proteintech's proprietary in-house recombinant technology. Recombinant production enables unrivalled batch-to-batch consistency, easy scale-up, and future security of supply.

Matched antibody pairs are designed for use in a variety of assays and platforms that require matched antibody pairs.

Antibody use should be optimized for each application and assay.

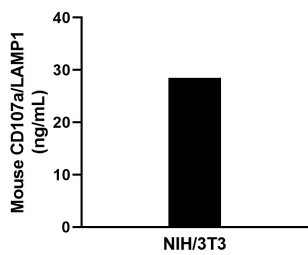
### Storage

**Storage:**  
Store at -80°C.

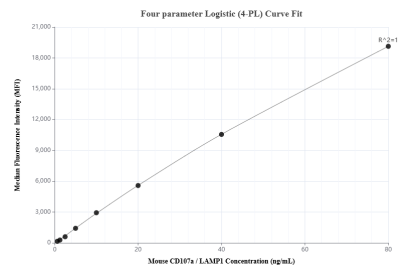
**The product is shipped with ice packs. Upon receipt, store it immediately at -80°C**

**Storage buffer:**  
PBS only

## Selected Validation Data



The mean CD107a / LAMP1 concentration was determined to be 28.9 ng/mL in NIH/3T3 cell extract based on a 1.4 mg/mL extract load.



Cytometric bead array standard curve of MP02362-1, MOUSE CD107a / LAMP1 Recombinant Matched Antibody Pair, PBS Only. Capture antibody: 86337-2-PBS. Detection antibody: 86337-1-PBS. Standard: Eg3858. Range: 0.625-80 ng/mL.