

Alpha Actinin Recombinant Matched Antibody Pair, PBS Only

Catalog Number: **MP02360-1**

Capture Antibody Information

Catalog Number:
86340-2-PBS
Host:
Rabbit
Isotype:
IgG
Purification Method:
Protein A purification

Clone ID:
250833F4
Reactivity:
human
GenBank:
BC015766
Immunogen Catalog Number:
Ag1859

Conjugate:
Unconjugated
Full name:
actinin, alpha 1
Gene ID:
87

Detection Antibody Information

Catalog Number:
86340-1-PBS
Host:
Rabbit
Isotype:
IgG
Purification Method:
Protein A purification

Clone ID:
250833B7
Reactivity:
human
GenBank:
BC015766
Immunogen Catalog Number:
Ag1859

Conjugate:
Unconjugated
Full name:
actinin, alpha 1
Gene ID:
87

Applications

Tested Applications:
Cytometric bead array

Range:
0.781-100 ng/mL (Cytometric Bead Array)

Recommended Dilutions:
It is recommended that this reagent should be titrated in each testing system to obtain optimal results.

Product Information

MP02360-1 targets Alpha Actinin in immunoassays as a matched antibody pair. Validated in Cytometric bead array.

Capture antibody: a-Actinin Recombinant antibody, PBS Only (Capture) 86340-2-PBS (250833F4). 100 µg. Concentration 1 mg/mL.

Detection antibody: a-Actinin Recombinant antibody, PBS Only (Detector) 86340-1-PBS (250833B7). 100 µg. Concentration 1 mg/mL.

Unconjugated rabbit recombinant monoclonal antibody pair in PBS only storage buffer at a concentration of 1 mg/mL, ready for conjugation. Created using Proteintech's proprietary in-house recombinant technology. Recombinant production enables unrivalled batch-to-batch consistency, easy scale-up, and future security of supply.

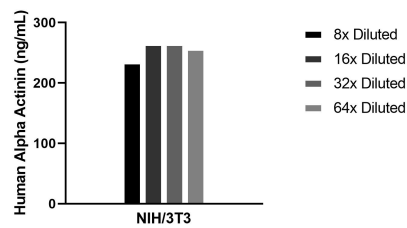
Matched antibody pairs are designed for use in a variety of assays and platforms that require matched antibody pairs.

Antibody use should be optimized for each application and assay.

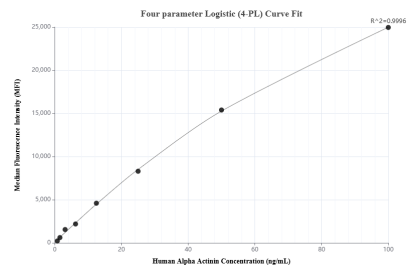
Storage

Storage:
Store at -80°C.
The product is shipped with ice packs. Upon receipt, store it immediately at -80°C
Storage buffer:
PBS only

Selected Validation Data



The mean Alpha Actinin concentration was determined to be 254.6 ng/mL in NIH/3T3 cell extract based on a 1.4 mg/mL extract load.



Cytometric bead array standard curve of MP02360-1, Alpha Actinin Recombinant Matched Antibody Pair, PBS Only. Capture antibody: 86340-2-PBS. Detection antibody: 86340-1-PBS. Standard: Ag1859. Range: 0.781-100 ng/mL.