

PTRH2 Recombinant Matched Antibody Pair, PBS Only

Catalog Number: **MP02359-1**

Capture Antibody Information

Catalog Number: 86343-2-PBS	Clone ID: 251056C4	Conjugate: Unconjugated
Host: Rabbit	Reactivity: human	Full name: peptidyl-tRNA hydrolase 2
Isotype: IgG	GenBank: BC006807	Gene ID: 51651
Purification Method: Protein A purification	Immunogen Catalog Number: Ag0839	

Detection Antibody Information

Catalog Number: 86343-1-PBS	Clone ID: 251056F5	Conjugate: Unconjugated
Host: Rabbit	Reactivity: human	Full name: peptidyl-tRNA hydrolase 2
Isotype: IgG	GenBank: BC006807	Gene ID: 51651
Purification Method: Protein A purification	Immunogen Catalog Number: Ag0839	

Applications

Tested Applications: Cytometric bead array	Range: 0.469-60 ng/mL (Cytometric Bead Array)	Recommended Dilutions: It is recommended that this reagent should be titrated in each testing system to obtain optimal results.
--	---	---

Product Information

MP02359-1 targets PTRH2 in immunoassays as a matched antibody pair. Validated in Cytometric bead array.

Capture antibody: PTRH2 Recombinant antibody, PBS Only (Capture) 86343-2-PBS (251056C4). 100 µg. Concentration 1 mg/mL.

Detection antibody: PTRH2 Recombinant antibody, PBS Only (Detector) 86343-1-PBS (251056F5). 100 µg. Concentration 1 mg/mL.

Unconjugated rabbit recombinant monoclonal antibody pair in PBS only storage buffer at a concentration of 1 mg/mL, ready for conjugation. Created using Proteintech's proprietary in-house recombinant technology. Recombinant production enables unrivalled batch-to-batch consistency, easy scale-up, and future security of supply.

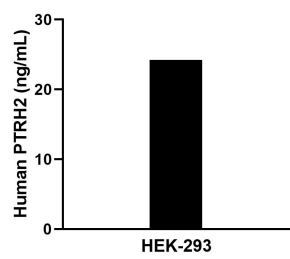
Matched antibody pairs are designed for use in a variety of assays and platforms that require matched antibody pairs.

Antibody use should be optimized for each application and assay.

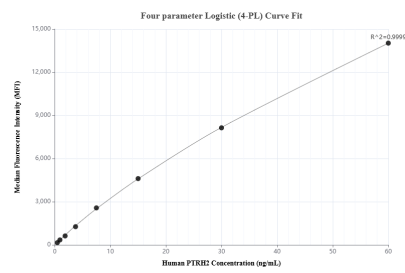
Storage

Storage:
Store at -80°C.
The product is shipped with ice packs. Upon receipt, store it immediately at -80°C
Storage buffer:
PBS only

Selected Validation Data



The mean PTRH2 concentration was determined to be 24.5 ng/mL in HEK-293 cell extract based on a 2.6 mg/mL extract load.



Cytometric bead array standard curve of MP02359-1, PTRH2 Recombinant Matched Antibody Pair, PBS Only. Capture antibody: 86343-2-PBS. Detection antibody: 86343-1-PBS. Standard: Ag0839. Range: 0.469-60 ng/mL.