

# LY75/DEC-205 Recombinant Matched Antibody Pair, PBS Only

Catalog Number: **MP02358-2**

## Capture Antibody Information

<b>Catalog Number:</b> 86342-4-PBS	<b>Clone ID:</b> 250076F1	<b>Conjugate:</b> Unconjugated
<b>Host:</b> Rabbit	<b>Reactivity:</b> human	<b>Full name:</b> lymphocyte antigen 75
<b>Isotype:</b> IgG	<b>GenBank:</b> NM_002349.4	<b>Gene ID:</b> 4065
<b>Purification Method:</b> Protein A purification	<b>Immunogen Catalog Number:</b> Eg3439	

## Detection Antibody Information

<b>Catalog Number:</b> 86342-5-PBS	<b>Clone ID:</b> 250076G5	<b>Conjugate:</b> Unconjugated
<b>Host:</b> Rabbit	<b>Reactivity:</b> human	<b>Full name:</b> lymphocyte antigen 75
<b>Isotype:</b> IgG	<b>GenBank:</b> NM_002349.4	<b>Gene ID:</b> 4065
<b>Purification Method:</b> Protein A purification	<b>Immunogen Catalog Number:</b> Eg3439	

## Applications

<b>Tested Applications:</b> Sandwich ELISA	<b>Range:</b> 0.195–12.5 ng/mL (Sandwich ELISA)	<b>Recommended Dilutions:</b> It is recommended that this reagent should be titrated in each testing system to obtain optimal results.
---	--	---

## Product Information

MP02358-2 targets LY75/DEC-205 in immunoassays as a matched antibody pair. Validated in Sandwich ELISA.

Capture antibody: LY75/CD205 Recombinant antibody, PBS Only (Capture) 86342-4-PBS (250076F1). 100 µg. Concentration 1 mg/mL.

Detection antibody: LY75/CD205 Recombinant antibody, PBS Only (Detector) 86342-5-PBS (250076G5). 100 µg. Concentration 1 mg/mL.

Unconjugated rabbit recombinant monoclonal antibody pair in PBS only storage buffer at a concentration of 1 mg/mL, ready for conjugation. Created using Proteintech's proprietary in-house recombinant technology. Recombinant production enables unrivalled batch-to-batch consistency, easy scale-up, and future security of supply.

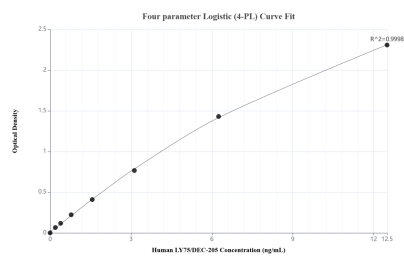
Matched antibody pairs are designed for use in a variety of assays and platforms that require matched antibody pairs.

Antibody use should be optimized for each application and assay.

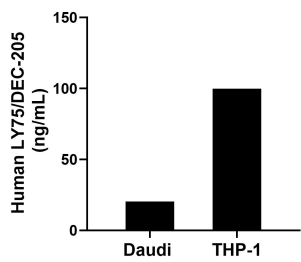
## Storage

**Storage:**  
Store at -80°C.  
**The product is shipped with ice packs. Upon receipt, store it immediately at -80°C**  
**Storage buffer:**  
PBS only

## Selected Validation Data



Sandwich ELISA standard curve of MP02358-2, Human LY75/DEC-205 Recombinant Matched Antibody Pair - PBS only. 86342-4-PBS was coated to a plate as the capture antibody and incubated with serial dilutions of standard Eg3439. 86342-5-PBS was HRP conjugated as the detection antibody. Range: 0.195-12.5 ng/mL.



The mean LY75/DEC-205 concentration was determined to be 20.40 ng/mL in Daudi cell extract based on a 1.10 mg/mL extract load and 99.83 ng/mL in THP-1 cell extract based on a 1.20 mg/mL extract load.