

# ACE2 Recombinant Matched Antibody Pair, PBS Only

Catalog Number: **MP02357-1**

## Capture Antibody Information

**Catalog Number:**  
80062-3-PBS

**Host:**  
Rabbit

**Isotype:**  
IgG

**Purification Method:**  
Protein A purification

**Clone ID:**  
250363D2

**Reactivity:**  
human

**GenBank:**  
BC048094

**Immunogen Catalog Number:**  
Eg0074

**Conjugate:**  
Unconjugated

**Full name:**  
angiotensin I converting enzyme (peptidyl-dipeptidase A) 2

**Gene ID:**  
59272

## Detection Antibody Information

**Catalog Number:**  
80062-2-PBS

**Host:**  
Rabbit

**Isotype:**  
IgG

**Purification Method:**  
Protein A purification

**Clone ID:**  
250363H4

**Reactivity:**  
human

**GenBank:**  
BC048094

**Immunogen Catalog Number:**  
Eg0074

**Conjugate:**  
Unconjugated

**Full name:**  
angiotensin I converting enzyme (peptidyl-dipeptidase A) 2

**Gene ID:**  
59272

## Applications

**Tested Applications:**  
Cytometric bead array

**Range:**  
0.781-100 ng/mL (Cytometric Bead Array)

**Recommended Dilutions:**  
It is recommended that this reagent should be titrated in each testing system to obtain optimal results.

## Product Information

MP02357-1 targets ACE2 in immunoassays as a matched antibody pair. Validated in Cytometric bead array.

Capture antibody: ACE2 Recombinant antibody, PBS Only (Capture) 80062-3-PBS (250363D2). 100 µg. Concentration 1 mg/mL.

Detection antibody: ACE2 Recombinant antibody, PBS Only (Detector) 80062-2-PBS (250363H4). 100 µg. Concentration 1 mg/mL.

Unconjugated rabbit recombinant monoclonal antibody pair in PBS only storage buffer at a concentration of 1 mg/mL, ready for conjugation. Created using Proteintech's proprietary in-house recombinant technology. Recombinant production enables unrivalled batch-to-batch consistency, easy scale-up, and future security of supply.

Matched antibody pairs are designed for use in a variety of assays and platforms that require matched antibody pairs.

Antibody use should be optimized for each application and assay.

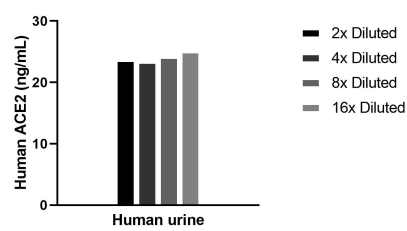
## Storage

**Storage:**  
Store at -80°C.

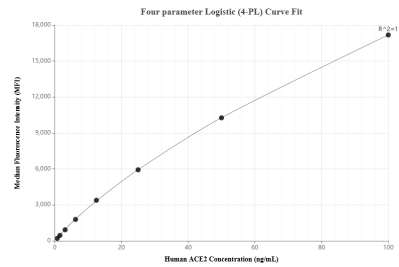
**The product is shipped with ice packs. Upon receipt, store it immediately at -80°C**

**Storage buffer:**  
PBS only

## Selected Validation Data



The mean ACE2 concentration was determined to be 24.0 ng/mL in human urine .



Cytometric bead array standard curve of MP02357-1, ACE2 Recombinant Matched Antibody Pair, PBS Only. Capture antibody: 80062-3-PBS. Detection antibody: 80062-2-PBS. Standard: Eg0074. Range: 0.781-100 ng/mL