

# IGSF8 Recombinant Matched Antibody Pair, PBS Only

Catalog Number: **MP02356-1**

## Capture Antibody Information

**Catalog Number:**  
86341-2-PBS  
**Host:**  
Rabbit  
**Isotype:**  
IgG  
**Purification Method:**  
Protein A purification

**Clone ID:**  
243019G9  
**Reactivity:**  
human  
**GenBank:**  
NM\_052868.6  
**Immunogen Catalog Number:**  
Eg2664

**Conjugate:**  
Unconjugated  
**Full name:**  
immunoglobulin superfamily, member 8  
**Gene ID:**  
93185

## Detection Antibody Information

**Catalog Number:**  
86341-1-PBS  
**Host:**  
Rabbit  
**Isotype:**  
IgG  
**Purification Method:**  
Protein A purification

**Clone ID:**  
243019H8  
**Reactivity:**  
human  
**GenBank:**  
NM\_052868.6  
**Immunogen Catalog Number:**  
Eg2664

**Conjugate:**  
Unconjugated  
**Full name:**  
immunoglobulin superfamily, member 8  
**Gene ID:**  
93185

## Applications

**Tested Applications:**  
Cytometric bead array

**Range:**  
1.562-100 ng/mL (Cytometric Bead Array)

**Recommended Dilutions:**  
It is recommended that this reagent should be titrated in each testing system to obtain optimal results.

## Product Information

MP02356-1 targets IGSF8 in immunoassays as a matched antibody pair. Validated in Cytometric bead array.

Capture antibody: IGSF8 Recombinant antibody, PBS Only (Capture) 86341-2-PBS (243019G9). 100 µg. Concentration 1 mg/mL.

Detection antibody: IGSF8 Recombinant antibody, PBS Only (Detector) 86341-1-PBS (243019H8). 100 µg. Concentration 1 mg/mL.

Unconjugated rabbit recombinant monoclonal antibody pair in PBS only storage buffer at a concentration of 1 mg/mL, ready for conjugation. Created using Proteintech's proprietary in-house recombinant technology. Recombinant production enables unrivalled batch-to-batch consistency, easy scale-up, and future security of supply.

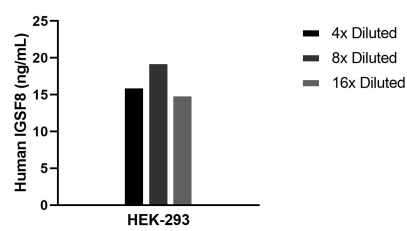
Matched antibody pairs are designed for use in a variety of assays and platforms that require matched antibody pairs.

Antibody use should be optimized for each application and assay.

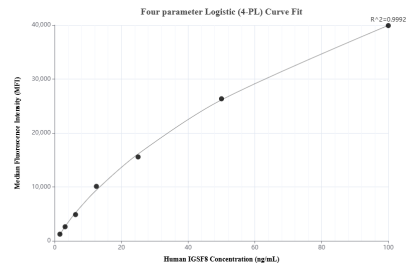
## Storage

**Storage:**  
Store at -80°C.  
**The product is shipped with ice packs. Upon receipt, store it immediately at -80°C**  
**Storage buffer:**  
PBS only

## Selected Validation Data



The mean IGSF8 concentration was determined to be 16.8 ng/mL in HEK-293 cell extract based on a 2.6 mg/mL extract load.



Cytometric bead array standard curve of MP02356-1, IGSF8 Recombinant Matched Antibody Pair, PBS Only. Capture antibody: 86341-2-PBS. Detection antibody: 86341-1-PBS. Standard: Eg2664. Range: 1.562-100 ng/mL