

REL Recombinant Matched Antibody Pair, PBS Only

Catalog Number: **MP02354-2**

Capture Antibody Information

Catalog Number:
86140-5-PBS
Host:
Rabbit
Isotype:
IgG
Purification Method:
Protein A purification

Clone ID:
250180B2
Reactivity:
human
GenBank:
NM_001291746
Immunogen Catalog Number:
Ag26803

Conjugate:
Unconjugated
Full name:
v-rel reticuloendotheliosis viral oncogene homolog (avian)
Gene ID:
5966

Detection Antibody Information

Catalog Number:
86140-4-PBS
Host:
Rabbit
Isotype:
IgG
Purification Method:
Protein A purification

Clone ID:
250180B7
Reactivity:
human
GenBank:
NM_001291746
Immunogen Catalog Number:
Ag26803

Conjugate:
Unconjugated
Full name:
v-rel reticuloendotheliosis viral oncogene homolog (avian)
Gene ID:
5966

Applications

Tested Applications:
Cytometric bead array

Range:
0.625-80 ng/mL (Cytometric Bead Array)

Recommended Dilutions:
It is recommended that this reagent should be titrated in each testing system to obtain optimal results.

Product Information

MP02354-2 targets REL in immunoassays as a matched antibody pair. Validated in Cytometric bead array.

Capture antibody: REL Recombinant antibody, PBS Only (Capture) 86140-5-PBS (250180B2). 100 µg. Concentration 1 mg/mL.

Detection antibody: REL Recombinant antibody, PBS Only (Detector) 86140-4-PBS (250180B7). 100 µg. Concentration 1 mg/mL.

Unconjugated rabbit recombinant monoclonal antibody pair in PBS only storage buffer at a concentration of 1 mg/mL, ready for conjugation. Created using Proteintech's proprietary in-house recombinant technology. Recombinant production enables unrivalled batch-to-batch consistency, easy scale-up, and future security of supply.

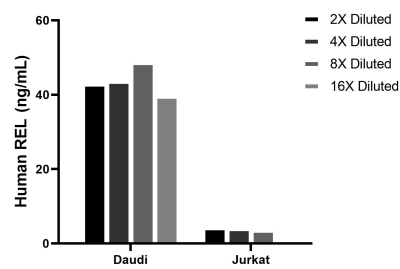
Matched antibody pairs are designed for use in a variety of assays and platforms that require matched antibody pairs.

Antibody use should be optimized for each application and assay.

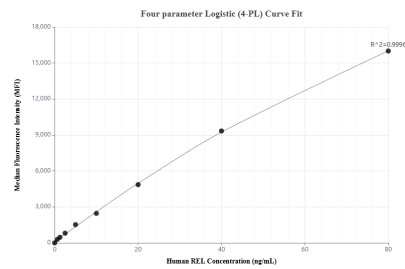
Storage

Storage:
Store at -80°C.
The product is shipped with ice packs. Upon receipt, store it immediately at -80°C
Storage buffer:
PBS only

Selected Validation Data



The mean REL concentration was determined to be 43.7 ng/mL in Daudi cell extract based on a 1.1 mg/mL extract load, 3.9 ng/mL in Jurkat cell extract based on a 1.2 mg/mL extract load.



Cytometric bead array standard curve of MP02354-2, REL Recombinant Matched Antibody Pair, PBS Only. Capture antibody: 86140-5-PBS. Detection antibody: 86140-4-PBS. Standard: Ag26803. Range: 0.625-80 ng/mL.