

# REL Recombinant Matched Antibody Pair, PBS Only

Catalog Number: MP02354-1

## Capture Antibody Information

**Catalog Number:**  
86140-3-PBS

**Host:**  
Rabbit

**Isotype:**  
IgG

**Purification Method:**  
Protein A purification

**Clone ID:**  
250180G8

**Reactivity:**  
human

**GenBank:**  
NM\_001291746

**Immunogen Catalog Number:**  
Ag26803

**Conjugate:**  
Unconjugated

**Full name:**  
v-rel reticuloendotheliosis viral oncogene homolog (avian)

**Gene ID:**  
5966

## Detection Antibody Information

**Catalog Number:**  
86140-2-PBS

**Host:**  
Rabbit

**Isotype:**  
IgG

**Purification Method:**  
Protein A purification

**Clone ID:**  
250180D6

**Reactivity:**  
human

**GenBank:**  
NM\_001291746

**Immunogen Catalog Number:**  
Ag26803

**Conjugate:**  
Unconjugated

**Full name:**  
v-rel reticuloendotheliosis viral oncogene homolog (avian)

**Gene ID:**  
5966

## Applications

**Tested Applications:**  
Cytometric bead array

**Range:**  
0.625-40 ng/mL (Cytometric Bead Array)

**Recommended Dilutions:**  
It is recommended that this reagent should be titrated in each testing system to obtain optimal results.

## Product Information

MP02354-1 targets REL in immunoassays as a matched antibody pair. Validated in Cytometric bead array.

Capture antibody: REL Recombinant antibody, PBS Only (Capture) 86140-3-PBS (250180G8). 100 µg. Concentration 1 mg/mL.

Detection antibody: REL Recombinant antibody, PBS Only (Detector) 86140-2-PBS (250180D6). 100 µg. Concentration 1 mg/mL.

Unconjugated rabbit recombinant monoclonal antibody pair in PBS only storage buffer at a concentration of 1 mg/mL, ready for conjugation. Created using Proteintech's proprietary in-house recombinant technology. Recombinant production enables unrivalled batch-to-batch consistency, easy scale-up, and future security of supply.

Matched antibody pairs are designed for use in a variety of assays and platforms that require matched antibody pairs.

Antibody use should be optimized for each application and assay.

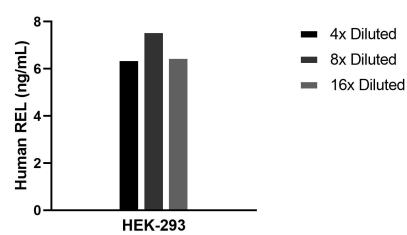
## Storage

**Storage:**  
Store at -80°C.

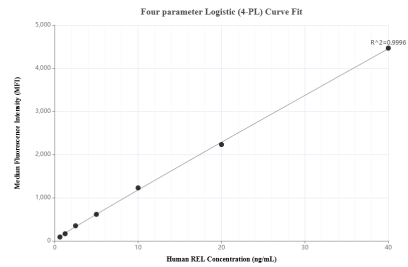
**The product is shipped with ice packs. Upon receipt, store it immediately at -80°C**

**Storage buffer:**  
PBS only

## Selected Validation Data



The mean REL concentration was determined to be 6.8 ng/mL in HEK-293 cell extract based on a 2.6 mg/mL extract load.



Cytometric bead array standard curve of MP02354-1, REL Recombinant Matched Antibody Pair, PBS Only. Capture antibody: 86140-3-PBS. Detection antibody: 86140-2-PBS. Standard: Ag26803. Range: 0.625-40 ng/mL.