

# Mouse L1CAM Recombinant Matched Antibody Pair, PBS Only

Catalog Number: **MP02352-2**

## Capture Antibody Information

Catalog Number: 86305-4-PBS	Clone ID: 250101F11	Conjugate: Unconjugated
Host: Rabbit	Reactivity: mouse	Full name: L1 cell adhesion molecule
Isotype: IgG	GenBank: N/A	Gene ID: 16728
Purification Method: Protein A purification	Immunogen Catalog Number: Eg3022	

## Detection Antibody Information

Catalog Number: 86305-3-PBS	Clone ID: 250101A12	Conjugate: Unconjugated
Host: Rabbit	Reactivity: mouse	Full name: L1 cell adhesion molecule
Isotype: IgG	GenBank: N/A	Gene ID: 16728
Purification Method: Protein A purification	Immunogen Catalog Number: Eg3022	

## Applications

Tested Applications: Sandwich ELISA	Range: 0.313-20 ng/mL (Sandwich ELISA)	Recommended Dilutions: It is recommended that this reagent should be titrated in each testing system to obtain optimal results.
--	---	--

## Product Information

MP02352-2 targets L1CAM in immunoassays as a matched antibody pair. Validated in Sandwich ELISA.

Capture antibody: Mouse L1cam Recombinant monoclonal antibody, PBS Only (Capture) 86305-4-PBS (250101F11). 100 µg. Concentration 1 mg/mL.

Detection antibody: Mouse L1cam Recombinant monoclonal antibody, PBS Only (Detector) 86305-3-PBS (250101A12). 100 µg. Concentration 1 mg/mL.

Unconjugated rabbit recombinant monoclonal antibody pair in PBS only storage buffer at a concentration of 1 mg/mL, ready for conjugation. Created using Proteintech's proprietary in-house recombinant technology. Recombinant production enables unrivalled batch-to-batch consistency, easy scale-up, and future security of supply.

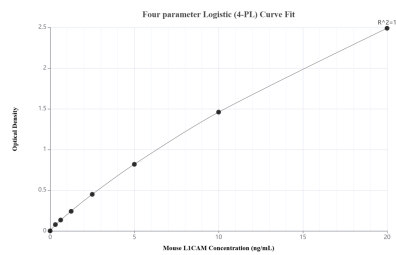
Matched antibody pairs are designed for use in a variety of assays and platforms that require matched antibody pairs.

Antibody use should be optimized for each application and assay.

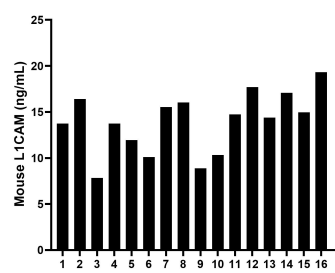
## Storage

Storage:  
Store at -80°C.  
**The product is shipped with ice packs. Upon receipt, store it immediately at -80°C**  
Storage buffer:  
PBS only

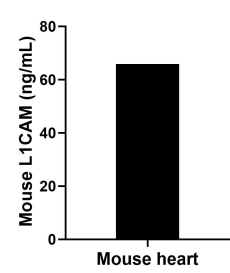
## Selected Validation Data



Sandwich ELISA standard curve of MP02352-2, Mouse L1CAM Recombinant Matched Antibody Pair - PBS only. 86305-4-PBS was coated to a plate as the capture antibody and incubated with serial dilutions of standard Eg3022. 86305-3-PBS was HRP conjugated as the detection antibody. Range: 0.313-20 ng/mL.



Serum of sixteen mice was measured. The L1CAM concentration of detected samples was determined to be 13.92 ng/mL with a range of 7.82-19.31 ng/mL.



The mean L1CAM concentration was determined to be 65.90 ng/mL in mouse heart extract based on a 6.90 mg/mL extract load.