

Mouse L1CAM Recombinant Matched Antibody Pair, PBS Only

Catalog Number: **MP02352-1**

Capture Antibody Information

Catalog Number: 86305-2-PBS	Clone ID: 250101C11	Conjugate: Unconjugated
Host: Rabbit	Reactivity: mouse, rat	Full name: L1 cell adhesion molecule
Isotype: IgG	GenBank: N/A	Gene ID: 16728
Purification Method: Protein A purification	Immunogen Catalog Number: Eg3022	

Detection Antibody Information

Catalog Number: 86305-3-PBS	Clone ID: 250101A12	Conjugate: Unconjugated
Host: Rabbit	Reactivity: mouse	Full name: L1 cell adhesion molecule
Isotype: IgG	GenBank: N/A	Gene ID: 16728
Purification Method: Protein A purification	Immunogen Catalog Number: Eg3022	

Applications

Tested Applications: Cytometric bead array	Range: 0.781-100 ng/mL (Cytometric Bead Array)	Recommended Dilutions: It is recommended that this reagent should be titrated in each testing system to obtain optimal results.
--	--	---

Product Information

MP02352-1 targets L1CAM in immunoassays as a matched antibody pair. Validated in Cytometric bead array.

Capture antibody: Mouse L1CAM/CD171 Recombinant monoclonal antibody, PBS Only (Capture) 86305-2-PBS (250101C11). 100 µg. Concentration 1 mg/mL.

Detection antibody: Mouse L1cam Recombinant monoclonal antibody, PBS Only (Detector) 86305-3-PBS (250101A12). 100 µg. Concentration 1 mg/mL.

Unconjugated rabbit recombinant monoclonal antibody pair in PBS only storage buffer at a concentration of 1 mg/mL, ready for conjugation. Created using Proteintech's proprietary in-house recombinant technology. Recombinant production enables unrivalled batch-to-batch consistency, easy scale-up, and future security of supply.

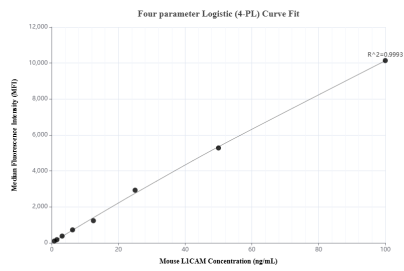
Matched antibody pairs are designed for use in a variety of assays and platforms that require matched antibody pairs.

Antibody use should be optimized for each application and assay.

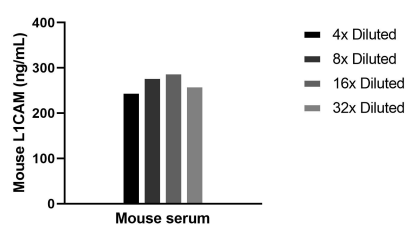
Storage

Storage:
Store at -80°C.
The product is shipped with ice packs. Upon receipt, store it immediately at -80°C
Storage buffer:
PBS only

Selected Validation Data



Cytometric bead array standard curve of MP02352-1, MOUSE L1CAM Recombinant Matched Antibody Pair, PBS Only. Capture antibody: 86305-2-PBS. Detection antibody: 86305-3-PBS. Standard: Eg3022. Range: 0.781-100 ng/mL.



The mean L1CAM concentration was determined to be 269.5 ng/mL in mouse serum.