

ATP6V1C1 Recombinant Matched Antibody Pair, PBS Only

Catalog Number: **MP02350-1**

Capture Antibody Information

Catalog Number:
86345-2-PBS
Host:
Rabbit
Isotype:
IgG
Purification Method:
Protein A purification

Clone ID:
250958C3
Reactivity:
human
GenBank:
BC010960
Immunogen Catalog Number:
Ag9020

Conjugate:
Unconjugated
Full name:
ATPase, H⁺ transporting, lysosomal 42kDa, V1 subunit C1
Gene ID:
528

Detection Antibody Information

Catalog Number:
86345-1-PBS
Host:
Rabbit
Isotype:
IgG
Purification Method:
Protein A purification

Clone ID:
250958E9
Reactivity:
human
GenBank:
BC010960
Immunogen Catalog Number:
Ag9020

Conjugate:
Unconjugated
Full name:
ATPase, H⁺ transporting, lysosomal 42kDa, V1 subunit C1
Gene ID:
528

Applications

Tested Applications:
Cytometric bead array

Range:
1.562-200 ng/mL (Cytometric Bead Array)

Recommended Dilutions:
It is recommended that this reagent should be titrated in each testing system to obtain optimal results.

Product Information

MP02350-1 targets ATP6V1C1 in immunoassays as a matched antibody pair. Validated in Cytometric bead array.

Capture antibody: ATP6V1C1 Recombinant antibody, PBS Only (Capture) 86345-2-PBS (250958C3). 100 µg. Concentration 1 mg/mL.

Detection antibody: ATP6V1C1 Recombinant antibody, PBS Only (Detector) 86345-1-PBS (250958E9). 100 µg. Concentration 1 mg/mL.

Unconjugated rabbit recombinant monoclonal antibody pair in PBS only storage buffer at a concentration of 1 mg/mL, ready for conjugation. Created using Proteintech's proprietary in-house recombinant technology. Recombinant production enables unrivalled batch-to-batch consistency, easy scale-up, and future security of supply.

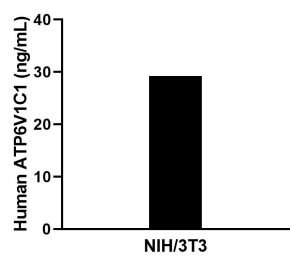
Matched antibody pairs are designed for use in a variety of assays and platforms that require matched antibody pairs.

Antibody use should be optimized for each application and assay.

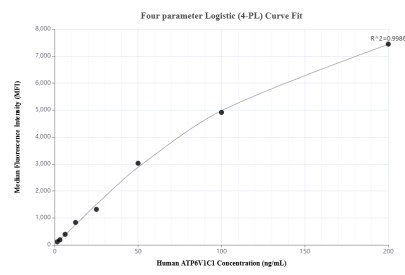
Storage

Storage:
Store at -80°C.
The product is shipped with ice packs. Upon receipt, store it immediately at -80°C
Storage buffer:
PBS only

Selected Validation Data



The mean ATP6V1C1 concentration was determined to be 29.6 ng/mL in NIH/3T3 cell extract based on a 1.4 mg/mL extract load.



Cytometric bead array standard curve of MP02350-1, ATP6V1C1 Recombinant Matched Antibody Pair, PBS Only. Capture antibody: 86345-2-PBS. Detection antibody: 86345-1-PBS. Standard: Ag9020. Range: 1.562-200 ng/mL.