

For Research Use Only

Mouse OLR1/LOX1 Recombinant Matched Antibody Pair, PBS Only



Catalog Number:MP02348-1

Capture Antibody Information

Catalog Number:
86230-2-PBS
Host:
Rabbit
Isotype:
IgG
Purification Method:
Protein A purification

Clone ID:
250111E7
Reactivity:
mouse
GenBank:
NM_138648.2
Immunogen Catalog Number:
Eg2473

Conjugate:
Unconjugated
Full name:
oxidized low density lipoprotein (lectin-like) receptor 1
Gene ID:
108078

Detection Antibody Information

Catalog Number:
86230-1-PBS
Host:
Rabbit
Isotype:
IgG
Purification Method:
Protein A purification

Clone ID:
250111H3
Reactivity:
mouse
GenBank:
NM_138648.2
Immunogen Catalog Number:
Eg2473

Conjugate:
Unconjugated
Full name:
oxidized low density lipoprotein (lectin-like) receptor 1
Gene ID:
108078

Applications

Tested Applications:
Cytometric bead array, Sandwich ELISA

Range:
0.156-20 ng/mL (Cytometric Bead Array)
31.3-2000 pg/mL (Sandwich ELISA)

Recommended Dilutions:
It is recommended that this reagent should be titrated in each testing system to obtain optimal results.

Product Information

MP02348-1 targets OLR1/LOX1 in immunoassays as a matched antibody pair. Validated in Cytometric bead array, Sandwich ELISA.

Capture antibody: Mouse Olr1 Recombinant monoclonal antibody, PBS Only (Capture) 86230-2-PBS (250111E7). 100 μ g. Concentration 1 mg/mL.

Detection antibody: Mouse Olr1 Recombinant monoclonal antibody, PBS Only (Detector) 86230-1-PBS (250111H3). 100 μ g. Concentration 1 mg/mL.

Unconjugated rabbit recombinant monoclonal antibody pair in PBS only storage buffer at a concentration of 1 mg/mL, ready for conjugation. Created using Proteintech's proprietary in-house recombinant technology. Recombinant production enables unrivalled batch-to-batch consistency, easy scale-up, and future security of supply.

Matched antibody pairs are designed for use in a variety of assays and platforms that require matched antibody pairs.

Antibody use should be optimized for each application and assay.

Storage

Storage:
Store at -80°C.

The product is shipped with ice packs. Upon receipt, store it immediately at -80°C

Storage buffer:
PBS only

For technical support and original validation data for this product please contact:

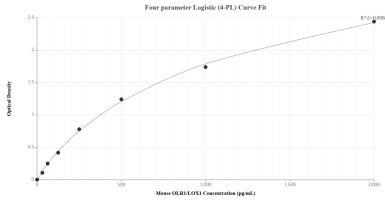
T: 4006900926

E: Proteintech-CN@ptglab.com

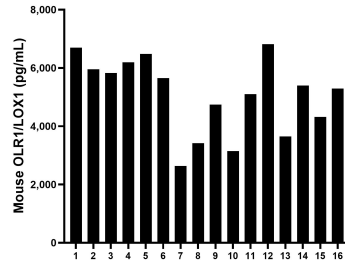
W: ptgcn.com

This product is exclusively available under Proteintech Group brand and is not available to purchase from any other manufacturer.

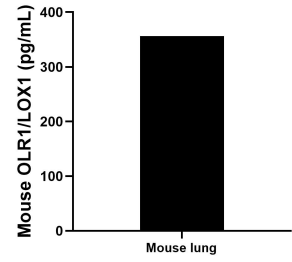
Selected Validation Data



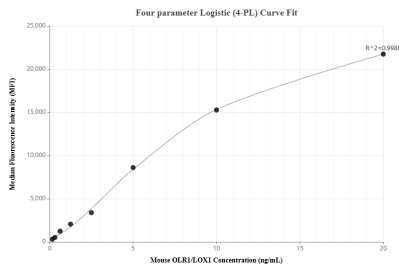
Sandwich ELISA standard curve of MP02348-1, Mouse OLR1/LOX1 Recombinant Matched Antibody Pair - PBS only. 86230-2-PBS was coated to a plate as the capture antibody and incubated with serial dilutions of standard Eg2473. 86230-1-PBS was HRP conjugated as the detection antibody. Range: 31.3-2000 pg/mL



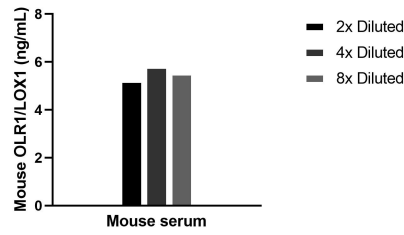
Serum of sixteen mice was measured. The OLR1/LOX1 concentration of detected samples was determined to be 5,082.6 pg/mL with a range of 2,635.3-6,814.9 pg/mL



Mouse lung, cut into 1-2 mm pieces, was cultured in RPMI supplemented with 10% fetal bovine serum. An aliquot of the cell culture supernatant was removed, assayed for mouse OLR1/LOX1 and measured 356.4 pg/mL



Cytometric bead array standard curve of MP02348-1, MOUSE OLR1/LOX1 Recombinant Matched Antibody Pair, PBS Only. Capture antibody: 86230-2-PBS. Detection antibody: 86230-1-PBS. Standard: Eg2473. Range: 0.156-20 ng/mL



The mean OLR1/LOX1 concentration was determined to be 5.5 ng/mL in mouse serum.