

PAH Recombinant Matched Antibody Pair, PBS Only

Catalog Number: **MP02346-1**

Capture Antibody Information

Catalog Number:
86231-2-PBS
Host:
Rabbit
Isotype:
IgG
Purification Method:
Protein A purification

Clone ID:
251007A9
Reactivity:
human
GenBank:
BC026251
Immunogen Catalog Number:
Ag9541

Conjugate:
Unconjugated
Full name:
phenylalanine hydroxylase
Gene ID:
5053

Detection Antibody Information

Catalog Number:
86231-1-PBS
Host:
Rabbit
Isotype:
IgG
Purification Method:
Protein A purification

Clone ID:
251007F3
Reactivity:
human
GenBank:
BC026251
Immunogen Catalog Number:
Ag9541

Conjugate:
Unconjugated
Full name:
phenylalanine hydroxylase
Gene ID:
5053

Applications

Tested Applications:
Cytometric bead array

Range:
0.781-100 ng/mL (Cytometric Bead Array)

Recommended Dilutions:
It is recommended that this reagent should be titrated in each testing system to obtain optimal results.

Product Information

MP02346-1 targets PAH in immunoassays as a matched antibody pair. Validated in Cytometric bead array.

Capture antibody: PAH Recombinant antibody, PBS Only (Capture) 86231-2-PBS (251007A9). 100 μ g. Concentration 1 mg/mL.

Detection antibody: PAH Recombinant antibody, PBS Only (Detector) 86231-1-PBS (251007F3). 100 μ g. Concentration 1 mg/mL.

Unconjugated rabbit recombinant monoclonal antibody pair in PBS only storage buffer at a concentration of 1 mg/mL, ready for conjugation. Created using Proteintech's proprietary in-house recombinant technology. Recombinant production enables unrivalled batch-to-batch consistency, easy scale-up, and future security of supply.

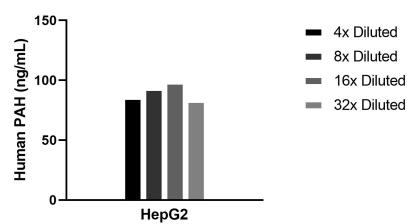
Matched antibody pairs are designed for use in a variety of assays and platforms that require matched antibody pairs.

Antibody use should be optimized for each application and assay.

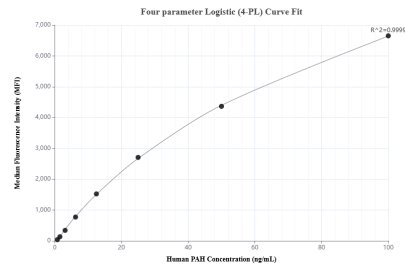
Storage

Storage:
Store at -80°C.
The product is shipped with ice packs. Upon receipt, store it immediately at -80°C
Storage buffer:
PBS only

Selected Validation Data



The mean PAH concentration was determined to be 89.5 ng/mL in Hela cell extract based on a 0.9 mg/mL extract load.



Cytometric bead array standard curve of MP02346-1, PAH Recombinant Matched Antibody Pair, PBS Only. Capture antibody: 86231-2-PBS. Detection antibody: 86231-1-PBS. Standard: Ag9541. Range: 0.781-100 ng/mL.