

RPS3A Recombinant Matched Antibody Pair, PBS Only

Catalog Number: **MP02339-1**

Capture Antibody Information

Catalog Number: 86254-2-PBS	Clone ID: 251033F2	Conjugate: Unconjugated
Host: Rabbit	Reactivity: human	Full name: ribosomal protein S3A
Isotype: IgG	GenBank: BC066926	Gene ID: 6189
Purification Method: Protein A purification	Immunogen Catalog Number: Ag5273	

Detection Antibody Information

Catalog Number: 86254-1-PBS	Clone ID: 251033G5	Conjugate: Unconjugated
Host: Rabbit	Reactivity: human	Full name: ribosomal protein S3A
Isotype: IgG	GenBank: BC066926	Gene ID: 6189
Purification Method: Protein A purification	Immunogen Catalog Number: Ag5273	

Applications

Tested Applications: Cytometric bead array	Range: 0.625-40 ng/mL (Cytometric Bead Array)	Recommended Dilutions: It is recommended that this reagent should be titrated in each testing system to obtain optimal results.
--	---	---

Product Information

MP02339-1 targets RPS3A in immunoassays as a matched antibody pair. Validated in Cytometric bead array.

Capture antibody: RPS3A Recombinant antibody, PBS Only (Capture) 86254-2-PBS (251033F2). 100 µg. Concentration 1 mg/mL.

Detection antibody: RPS3A Recombinant antibody, PBS Only (Detector) 86254-1-PBS (251033G5). 100 µg. Concentration 1 mg/mL.

Unconjugated rabbit recombinant monoclonal antibody pair in PBS only storage buffer at a concentration of 1 mg/mL, ready for conjugation. Created using Proteintech's proprietary in-house recombinant technology. Recombinant production enables unrivalled batch-to-batch consistency, easy scale-up, and future security of supply.

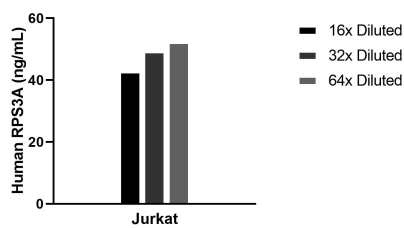
Matched antibody pairs are designed for use in a variety of assays and platforms that require matched antibody pairs.

Antibody use should be optimized for each application and assay.

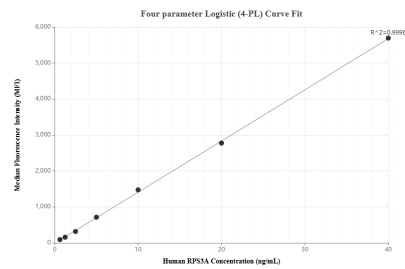
Storage

Storage:
Store at -80°C.
The product is shipped with ice packs. Upon receipt, store it immediately at -80°C
Storage buffer:
PBS only

Selected Validation Data



The mean RPS3A concentration was determined to be 48.1 ng/mL in Jurkat cell extract based on a 1.2 mg/mL extract load.



Cytometric bead array standard curve of MP02339-1, RPS3A Recombinant Matched Antibody Pair, PBS Only. Capture antibody: 86254-2-PBS. Detection antibody: 86254-1-PBS. Standard: Ag5273. Range: 0.625-40 ng/mL.