

For Research Use Only

# Rat CXCL7/Ppbp Recombinant Matched Antibody Pair, PBS Only



Catalog Number:MP02338-1

## Capture Antibody Information

**Catalog Number:**  
86222-2-PBS  
**Host:**  
Rabbit  
**Isotype:**  
IgG  
**Purification Method:**  
Protein A purification

**Clone ID:**  
250049C3  
**Reactivity:**  
rat  
**GenBank:**  
NM\_153721.1  
**Immunogen Catalog Number:**  
Eg3405

**Conjugate:**  
Unconjugated  
**Full name:**  
pro-platelet basic protein (chemokine (C-X-C motif) ligand 7)  
**Gene ID:**  
246358

## Detection Antibody Information

**Catalog Number:**  
86222-1-PBS  
**Host:**  
Rabbit  
**Isotype:**  
IgG  
**Purification Method:**  
Protein A purification

**Clone ID:**  
250049H3  
**Reactivity:**  
rat  
**GenBank:**  
NM\_153721.1  
**Immunogen Catalog Number:**  
Eg3405

**Conjugate:**  
Unconjugated  
**Full name:**  
pro-platelet basic protein (chemokine (C-X-C motif) ligand 7)  
**Gene ID:**  
246358

## Applications

**Tested Applications:**  
Sandwich ELISA

**Range:**  
23.4-1500 pg/mL (Sandwich ELISA)

**Recommended Dilutions:**  
It is recommended that this reagent should be titrated in each testing system to obtain optimal results.

## Product Information

MP02338-1 targets CXCL7/Ppbp in immunoassays as a matched antibody pair. Validated in Sandwich ELISA.

Capture antibody: Rat CXCL7/Thymus Chemokine-1 Recombinant antibody, PBS Only (Capture) 86222-2-PBS (250049C3). 100 µg. Concentration 1 mg/mL.

Detection antibody: Rat CXCL7/Thymus Chemokine-1 Recombinant antibody, PBS Only (Detector) 86222-1-PBS (250049H3). 100 µg. Concentration 1 mg/mL.

Unconjugated rabbit recombinant monoclonal antibody pair in PBS only storage buffer at a concentration of 1 mg/mL, ready for conjugation. Created using Proteintech's proprietary in-house recombinant technology. Recombinant production enables unrivalled batch-to-batch consistency, easy scale-up, and future security of supply.

Matched antibody pairs are designed for use in a variety of assays and platforms that require matched antibody pairs.

Antibody use should be optimized for each application and assay.

## Storage

**Storage:**  
Store at -80°C.  
**The product is shipped with ice packs. Upon receipt, store it immediately at -80°C**  
**Storage buffer:**  
PBS only

For technical support and original validation data for this product please contact:

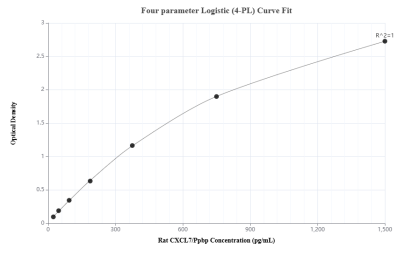
T: 4006900926

E: Proteintech-CN@ptglab.com

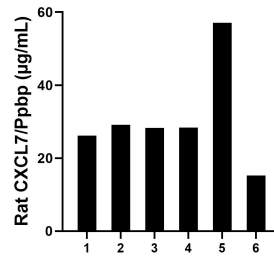
W: ptgcn.com

**This product is exclusively available under Proteintech Group brand and is not available to purchase from any other manufacturer.**

## Selected Validation Data



Sandwich ELISA standard curve of MP02338-1, Rat CXCL7/Ppbp Recombinant Matched Antibody Pair - PBS only. 86222-2-PBS was coated to a plate as the capture antibody and incubated with serial dilutions of standard Eg3405. 86222-1-PBS was HRP conjugated as the detection antibody. Range: 23.4-1500 µg/mL



Serum of six rats was measured. The rat CXCL7/Ppbp concentration of detected samples was determined to be 30.70 µg/mL with a range of 15.27 - 57.05 µg/mL.