

LRRC32 Recombinant Matched Antibody Pair, PBS Only

Catalog Number: **MP02335-1**

Capture Antibody Information

Catalog Number: 86059-2-PBS	Clone ID: 250611B1	Conjugate: Unconjugated
Host: Rabbit	Reactivity: human	Full name: leucine rich repeat containing 32
Isotype: IgG	GenBank: BC070079	Gene ID: 2615
Purification Method: Protein A purification	Immunogen Catalog Number: Ag23423	

Detection Antibody Information

Catalog Number: 86059-3-PBS	Clone ID: 250611H4	Conjugate: Unconjugated
Host: Rabbit	Reactivity: human	Full name: leucine rich repeat containing 32
Isotype: IgG	GenBank: BC070079	Gene ID: 2615
Purification Method: Protein A purification	Immunogen Catalog Number: Ag23423	

Applications

Tested Applications: Sandwich ELISA	Range: 0.156-10 ng/mL (Sandwich ELISA)	Recommended Dilutions: It is recommended that this reagent should be titrated in each testing system to obtain optimal results.
---	--	---

Product Information

MP02335-1 targets LRRC32 in immunoassays as a matched antibody pair. Validated in Sandwich ELISA.

Capture antibody: LRRC32 Recombinant antibody, PBS Only (Capture) 86059-2-PBS (250611B1). 100 µg. Concentration 1 mg/mL.

Detection antibody: LRRC32 Recombinant antibody, PBS Only (Detector) 86059-3-PBS (250611H4). 100 µg. Concentration 1 mg/mL.

Unconjugated rabbit recombinant monoclonal antibody pair in PBS only storage buffer at a concentration of 1 mg/mL, ready for conjugation. Created using Proteintech's proprietary in-house recombinant technology. Recombinant production enables unrivalled batch-to-batch consistency, easy scale-up, and future security of supply.

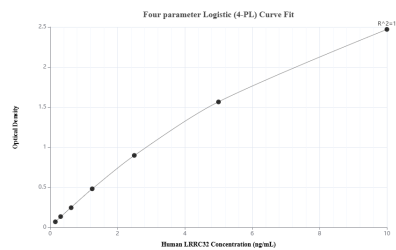
Matched antibody pairs are designed for use in a variety of assays and platforms that require matched antibody pairs.

Antibody use should be optimized for each application and assay.

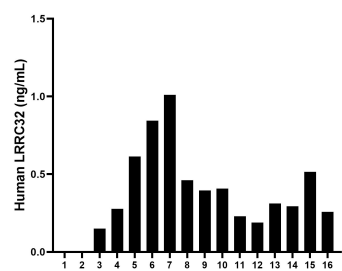
Storage

Storage:
Store at -80°C.
The product is shipped with ice packs. Upon receipt, store it immediately at -80°C
Storage buffer:
PBS only

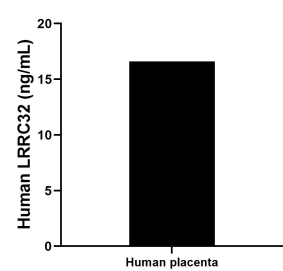
Selected Validation Data



Sandwich ELISA standard curve of MP02335-1, Human LRRC32 Recombinant Matched Antibody Pair - PBS only. 86059-2-PBS was coated to a plate as the capture antibody and incubated with serial dilutions of standard Ag23423. 86059-3-PBS was HRP conjugated as the detection antibody. Range: 0.156-10 ng/mL



Serum of sixteen individual healthy human donors was measured. The human LRRC32 concentration of detected samples was determined to be 0.37 ng/mL with a range of 0 - 1.01 ng/mL.



The mean LRRC32 concentration was determined to be 16.61 ng/mL in human placenta tissue extract based on a 3.2 mg/mL extract load.