

For Research Use Only

NEK1 Recombinant Matched Antibody Pair, PBS Only



Catalog Number:MP02331-1

Capture Antibody Information

Catalog Number:
86224-2-PBS
Host:
Rabbit
Isotype:
IgG
Purification Method:
Protein A purification

Clone ID:
250128H7
Reactivity:
human
GenBank:
BC114491
Immunogen Catalog Number:
Ag25970

Conjugate:
Unconjugated
Full name:
NIMA (never in mitosis gene a)-related kinase 1
Gene ID:
4750

Detection Antibody Information

Catalog Number:
86224-1-PBS
Host:
Rabbit
Isotype:
IgG
Purification Method:
Protein A purification

Clone ID:
250128F4
Reactivity:
human
GenBank:
BC114491
Immunogen Catalog Number:
Ag25970

Conjugate:
Unconjugated
Full name:
NIMA (never in mitosis gene a)-related kinase 1
Gene ID:
4750

Applications

Tested Applications:
Sandwich ELISA

Range:
78.1-5000 pg/mL (Sandwich ELISA)

Recommended Dilutions:
It is recommended that this reagent should be titrated in each testing system to obtain optimal results.

Product Information

MP02331-1 targets NEK1 in immunoassays as a matched antibody pair. Validated in Sandwich ELISA.

Capture antibody: NEK1 Recombinant antibody, PBS Only (Capture) 86224-2-PBS (250128H7). 100 µg. Concentration 1 mg/mL.

Detection antibody: NEK1 Recombinant antibody, PBS Only (Detector) 86224-1-PBS (250128F4). 100 µg. Concentration 1 mg/mL.

Unconjugated rabbit recombinant monoclonal antibody pair in PBS only storage buffer at a concentration of 1 mg/mL, ready for conjugation. Created using Proteintech's proprietary in-house recombinant technology. Recombinant production enables unrivalled batch-to-batch consistency, easy scale-up, and future security of supply.

Matched antibody pairs are designed for use in a variety of assays and platforms that require matched antibody pairs.

Antibody use should be optimized for each application and assay.

Storage

Storage:
Store at -80°C.
The product is shipped with ice packs. Upon receipt, store it immediately at -80°C
Storage buffer:
PBS only

For technical support and original validation data for this product please contact:

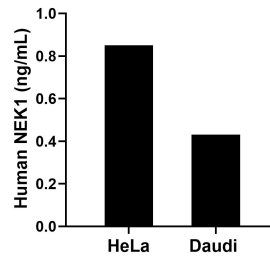
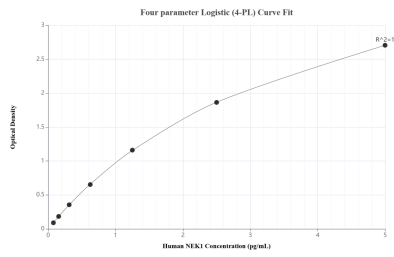
T: 4006900926

E: Proteintech-CN@ptglab.com

W: ptgcn.com

This product is exclusively available under Proteintech Group brand and is not available to purchase from any other manufacturer.

Selected Validation Data



Sandwich ELISA standard curve of MP02331-1, Human NEK1 Recombinant Matched Antibody Pair - PBS only. 86224-2-PBS was coated to a plate as the capture antibody and incubated with serial dilutions of standard Ag25970. 86224-1-PBS was HRP conjugated as the detection antibody. Range: 78.1-5000 pg/mL

The mean NEK1 concentration was determined to be 0.85 ng/mL in HeLa cell extract based on a 1.30 mg/mL extract load and 0.43 ng/mL in Daudi cell extract based on a 1.8 mg/mL extract load.