

ASGR2 Recombinant Matched Antibody Pair, PBS Only

Catalog Number: **MP02330-1**

Capture Antibody Information

Catalog Number: 86079-3-PBS	Clone ID: 250689H4	Conjugate: Unconjugated
Host: Rabbit	Reactivity: human	Full name: asialoglycoprotein receptor 2
Isotype: IgG	GenBank: N/A	Gene ID: 433
Purification Method: Protein A purification	Immunogen Catalog Number: Eg3052	

Detection Antibody Information

Catalog Number: 86079-2-PBS	Clone ID: 250689A4	Conjugate: Unconjugated
Host: Rabbit	Reactivity: human	Full name: asialoglycoprotein receptor 2
Isotype: IgG	GenBank: N/A	Gene ID: 433
Purification Method: Protein A purification	Immunogen Catalog Number: Eg3052	

Applications

Tested Applications: Sandwich ELISA	Range: 0.156-10 ng/mL (Sandwich ELISA)	Recommended Dilutions: It is recommended that this reagent should be titrated in each testing system to obtain optimal results.
---	--	---

Product Information

MP02330-1 targets ASGR2 in immunoassays as a matched antibody pair. Validated in Sandwich ELISA.

Capture antibody: ASGR2 Recombinant antibody, PBS Only (Capture) 86079-3-PBS (250689H4). 100 µg. Concentration 1 mg/mL.

Detection antibody: ASGR2 Recombinant antibody, PBS Only (Detector) 86079-2-PBS (250689A4). 100 µg. Concentration 1 mg/mL.

Unconjugated rabbit recombinant monoclonal antibody pair in PBS only storage buffer at a concentration of 1 mg/mL, ready for conjugation. Created using Proteintech's proprietary in-house recombinant technology. Recombinant production enables unrivalled batch-to-batch consistency, easy scale-up, and future security of supply.

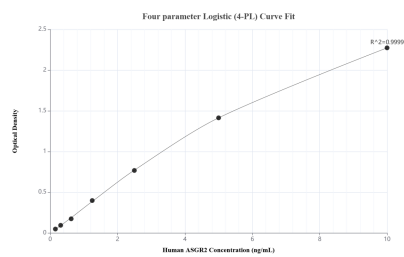
Matched antibody pairs are designed for use in a variety of assays and platforms that require matched antibody pairs.

Antibody use should be optimized for each application and assay.

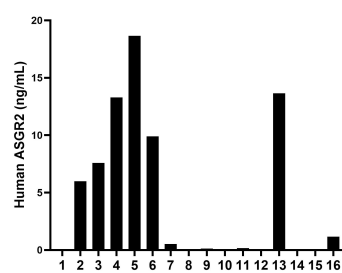
Storage

Storage:
Store at -80°C.
The product is shipped with ice packs. Upon receipt, store it immediately at -80°C
Storage buffer:
PBS only

Selected Validation Data



Sandwich ELISA standard curve of MP02330-1, Human ASGR2 Recombinant Matched Antibody Pair - PBS only. 86079-3-PBS was coated to a plate as the capture antibody and incubated with serial dilutions of standard Eg3052. 86079-2-PBS was HRP conjugated as the detection antibody. Range: 0.156-10 ng/mL.



Serum of sixteen individual healthy human donors was measured. The ASGR2 concentration of detected samples was determined to be 4.46 ng/mL with a range of ND-18.65 ng/mL.