

CCL24 Recombinant Matched Antibody Pair, PBS Only

Catalog Number: **MP02329-1**

Capture Antibody Information

Catalog Number: 86287-2-PBS	Clone ID: 243063C7	Conjugate: Unconjugated
Host: Rabbit	Reactivity: human	Full name: chemokine (C-C motif) ligand 24
Isotype: IgG	GenBank: NM_002991	Gene ID: 6369
Purification Method: Protein A purification	Immunogen Catalog Number: Eg0395	

Detection Antibody Information

Catalog Number: 86287-1-PBS	Clone ID: 243063B11	Conjugate: Unconjugated
Host: Rabbit	Reactivity: human	Full name: chemokine (C-C motif) ligand 24
Isotype: IgG	GenBank: NM_002991	Gene ID: 6369
Purification Method: Protein A purification	Immunogen Catalog Number: Eg0395	

Applications

Tested Applications: Sandwich ELISA	Range: 3.91-250 pg/mL (Sandwich ELISA)	Recommended Dilutions: It is recommended that this reagent should be titrated in each testing system to obtain optimal results.
---	--	---

Product Information

MP02329-1 targets CCL24 in immunoassays as a matched antibody pair. Validated in Sandwich ELISA.

Capture antibody: CCL24 Recombinant antibody, PBS Only (Capture) 86287-2-PBS (243063C7). 100 µg. Concentration 1 mg/mL.

Detection antibody: CCL24 Recombinant antibody, PBS Only (Detector) 86287-1-PBS (243063B11). 100 µg. Concentration 1 mg/mL.

Unconjugated rabbit recombinant monoclonal antibody pair in PBS only storage buffer at a concentration of 1 mg/mL, ready for conjugation. Created using Proteintech's proprietary in-house recombinant technology. Recombinant production enables unrivalled batch-to-batch consistency, easy scale-up, and future security of supply.

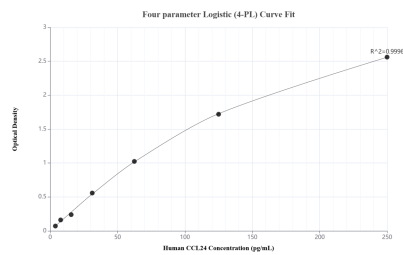
Matched antibody pairs are designed for use in a variety of assays and platforms that require matched antibody pairs.

Antibody use should be optimized for each application and assay.

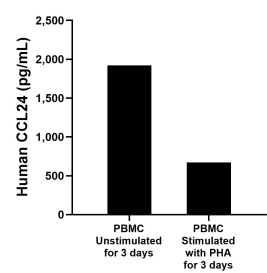
Storage

Storage:
Store at -80°C.
The product is shipped with ice packs. Upon receipt, store it immediately at -80°C
Storage buffer:
PBS only

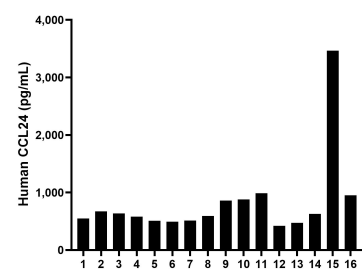
Selected Validation Data



Sandwich ELISA standard curve of MP02329-1, Human CCL24 Recombinant Matched Antibody Pair - PBS only. 86287-2-PBS was coated to a plate as the capture antibody and incubated with serial dilutions of standard Eg0395. 86287-1-PBS was HRP conjugated as the detection antibody. Range: 3.91-250 pg/mL.



Human peripheral blood mononuclear cells (PBMC) were cultured unstimulated or stimulated with 10 μ g/mL PHA for 3 days. The mean CCL24 concentration was determined to be 1,920.6 pg/mL in unstimulated PBMC supernatant, 673.2 pg/mL in PHA stimulated PBMC supernatant.



Serum of sixteen individual healthy human donors was measured. The CCL24 concentration of detected samples was determined to be 825.1 pg/mL with a range of 420.9-3,463.9 pg/mL.