

# RPL7A Recombinant Matched Antibody Pair, PBS Only

Catalog Number: **MP02327-1**

## Capture Antibody Information

<b>Catalog Number:</b> 86270-2-PBS	<b>Clone ID:</b> 250886D12	<b>Conjugate:</b> Unconjugated
<b>Host:</b> Rabbit	<b>Reactivity:</b> human	<b>Full name:</b> ribosomal protein L7a
<b>Isotype:</b> IgG	<b>GenBank:</b> BC005128	<b>Gene ID:</b> 6130
<b>Purification Method:</b> Protein A purification	<b>Immunogen Catalog Number:</b> Ag7543	

## Detection Antibody Information

<b>Catalog Number:</b> 86270-1-PBS	<b>Clone ID:</b> 250886C7	<b>Conjugate:</b> Unconjugated
<b>Host:</b> Rabbit	<b>Reactivity:</b> human	<b>Full name:</b> ribosomal protein L7a
<b>Isotype:</b> IgG	<b>GenBank:</b> BC005128	<b>Gene ID:</b> 6130
<b>Purification Method:</b> Protein A purification	<b>Immunogen Catalog Number:</b> Ag7543	

## Applications

<b>Tested Applications:</b> Cytometric bead array	<b>Range:</b> 0.781-100 ng/mL (Cytometric Bead Array)	<b>Recommended Dilutions:</b> It is recommended that this reagent should be titrated in each testing system to obtain optimal results.
--	--	---

## Product Information

MP02327-1 targets RPL7A in immunoassays as a matched antibody pair. Validated in Cytometric bead array.

Capture antibody: RPL7A Recombinant antibody, PBS Only (Capture) 86270-2-PBS (250886D12). 100 µg. Concentration 1 mg/mL.

Detection antibody: RPL7A Recombinant antibody, PBS Only (Detector) 86270-1-PBS (250886C7). 100 µg. Concentration 1 mg/mL.

Unconjugated rabbit recombinant monoclonal antibody pair in PBS only storage buffer at a concentration of 1 mg/mL, ready for conjugation. Created using Proteintech's proprietary in-house recombinant technology. Recombinant production enables unrivalled batch-to-batch consistency, easy scale-up, and future security of supply.

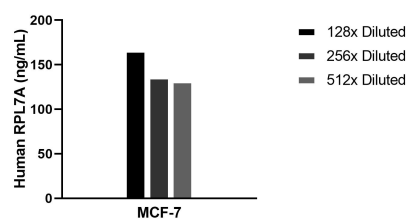
Matched antibody pairs are designed for use in a variety of assays and platforms that require matched antibody pairs.

Antibody use should be optimized for each application and assay.

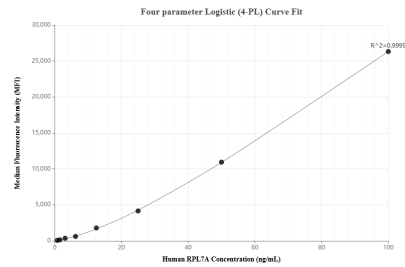
## Storage

**Storage:**  
Store at -80°C.  
**The product is shipped with ice packs. Upon receipt, store it immediately at -80°C**  
**Storage buffer:**  
PBS only

## Selected Validation Data



The mean RPL7A concentration was determined to be 144.1 ng/mL in MCF-7 cell extract based on a 1.2 mg/mL extract load.



Cytometric bead array standard curve of MP02327-1, RPL7A Recombinant Matched Antibody Pair, PBS Only. Capture antibody: 86270-2-PBS. Detection antibody: 86270-1-PBS. Standard: Ag7543. Range: 0.781-100 ng/mL.